

Registered by Australia Post — Publication No. SBG 1116



AUSTRALIAN SOCIETY OF EXPLORATION GEOPHYSICISTS

NEWSLETTER

PREVIEW # 13:

JANUARY - FEBRUARY 1988

CONTENTS	PAGE
Coming Events	2,3
ASEG Foundation	4,5
Professional Directory	6,7
Photo Album	8,29,30
ADELAIDE'88 Lift Out	9-28
ASEG Exhibition Booth	31
New Publication	32,33
Tribute - John Haigh	34,35
Calendar of Events	36

P.O. BOX 44, EASTWOOD, S.A. 5063

COMING EVENTS

ADELAIDE '88

See you in Adelaide from February 14-22 for the ASEG/SEG ADELAIDE'88 Conference and Exhibition.

FOURTH ANNUAL GULF COAST EXPLORATION AND DEVELOPMENT MEETING AND EXPOSITION.

The Fourth Annual Gulf Coast Exploration and Development Meeting and Exposition of the Society of Exploration Geophysicists will be held in New Orleans, March 13-15, 1988.

The central theme of the technical sessions will be "Cost Effective Exploration and Development through the Application of Technology and the Integration of Disciplines."

Listed below are the topics for the individual sessions:

- Recent Advances in Geophysics and a Look at the Future.
- Best Papers from Associated Societies (AAPG, GCAGS, etc.).
- P.C. Applications.
- Seismic Interpretation: Case Histories.
- Migration: Dip Movement, Prestack Migration, and Inversion.
- SPE/SEG Joint Session: Reservoir and Engineering Geophysics.

Abstracts Of 300 words or less, with no illustrations or mathematical equations, are requested for publication in the meeting program. In addition, an expanded abstract with illustrations would help the technical program committee in the review process. Talks should be limited to 20 minutes in length.

Abstracts must be received by February 18, 1988. Send original and two copies to:

Karl Kaufmann
Gulf Coast Meeting, Technical Program Chairman
Society of Exploration Geophysicists
P.O. Box 702740
Tulsa, OK 74170-2740 (74137).

THE TENTH GEOPHYSICAL CONVENTION OF TURKEY.

The Tenth Geophysical Convention will be held between April 4-8, 1988, in Ankara.

For further information contact:

TMMOB JEOFIZIK MUHENDISLERI ODASI
10. TURKIYE JEOFIZIK KURULTAYI
YURUTME KURULU

MITHATPASA CAD.45/15
P.K. 255 KIZILAY-ANKARA/TURKEY
Tel: (4) 135 13 79

CHINA COUNCIL FOR THE PROMOTION OF INTERNATIONAL TRADE

The China Council for the Promotion of International Trade is organising an International Exhibition on Geological Prospecting, Surveying, Seismology and Meteorology on October 11-17, 1988.

This Exhibition will be held in Beijing, China, and has been called GEOLOGY'88.

The objective of this International Exhibition is to create an opportunity for those in the industry to exchange information and ideas about prospecting, mining and exploration and knowledge in the physical environment.

SHK International Services LTD., and CIEC Exhibition Company (H.K.) LTD., in Hong Kong have been appointed as the overseas organisers of GEOLOGY'88.

The contact addresses are:

CIEC Exhibition Company (H.K.) LTD.
21/F, China Resources Bldg.,
26 Harbour Road, Wanchai

Tel: 5-8335078 Tlx: 81529 CIEC HX
Fax: 5-8931214

SHK International Services LTD.
22/F, 151 Gloucester Road
Hong Kong

Tel: 5-8326100 Tlx: 89587 SHKIS HX
Fax: 5-725258

CALL FOR PAPERS - 1988 SEG/MIDWEST MEETING.

The 1988 Midwest Meeting of the Society of Exploration Geophysicists will be held in Oklahoma City, Oklahoma, April 10-12, 1988.

The meeting is designed to meet the technical needs of the Midwest explorationist by providing technical sessions which relate to aspects of exploration and development Geophysics.

Sessions to be offered will include the topics of:

- Case Histories of Integrated Geophysical Interpretations.
- Processing Technology.
- Acquisition Techniques.

Abstracts of 300 words or less with no illustrations or mathematical equations are requested for publication in the meeting program. In addition, an expanded abstract with illustrations would help the technical committee in the review process. Talks should be limited to 20 minutes in length.

Abstracts must be received by February 18, 1988. Send original and two copies to:

Thomas A. Schultz
Midwest Meeting, Technical Program Chairman
Society of Exploration Geophysicists
P.O. Box 702740
Tulsa, OK 74170-2740.

ASEG RESEARCH FOUNDATION

For some time now, the Federal Executive of ASEG has been discussing the possible formation of an ASEG Research Foundation to formalise our support for research in exploration geophysics. No decisions have been made and this position paper is intended to solicit the opinions of the membership, at large, on this issue.

There are some administrative and taxation advantages in the formation of such a body but it would involve some modification (additions to) the articles of association of ASEG. Our aim would be to have the ASEG Research Foundation accepted as an approved research institute for the purposes of section 73A of the Income Tax Assessment Act. This would ensure that donations to the Foundation would be, at least 100% tax deductible. If donations are directed towards a specific project they could also qualify for 150% tax deduction, regardless of the amount and regardless of the status of the donor. We feel that this mechanism would facilitate support for research in exploration geophysics by both companies and individuals.

In order to establish the ASEG Research Foundation, as an approved research institute, we would need approval by CSIRO. The ASEG Memorandum and Articles of Association would require amendment to reflect the following:

- (1) The establishment of a separate research fund to be used exclusively for scientific research purposes, as defined by sub section 73A(6) of the Act, into which all donations for which income tax deductions are sought must be paid;
- (2) The administration of this fund to be carried out by a research committee of not less than five members, four of whom shall be suitably qualified for assessing the research being undertaken, and all of whom are approved by CSIRO;
- (3) Any changes in the membership of the research committee to be approved by CSIRO;
- (4) All decisions regarding areas of research and the application of moneys thereto are to be made only by the research committee;
- (5) The publication of the results of the research, financed by moneys for which deductions are allowable under sub-paragraph 78(1)(a)(x) of the Act, in the scientific and technical press;
- (6) Any Australian patents issued in the course of such research, financed by moneys for which deductions are allowable under sub-paragraph 78(1)(a)(x) of the Act, are to be made available for general use on the same terms to all interested parties; and

(7) In the event of the organisation being wound up, or research activities being ceased, any surplus funds in the account must be transferred to another research fund or organisation accepted as an approved research institute.

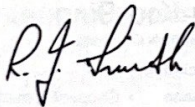
The addition of these statements to the existing Memorandum and Articles of Association of ASEG would be sufficient to initiate the ASEG Research Foundation. Following the appointment of a suitable committee to administer the Foundation, application and presumably acceptance by CSIRO as an approved research institute, we could then solicit funds from both companies and individuals (and, of course, from ASEG).

The advantage of the existence of such a body is that even small donations of a few dollars could be fully tax deductible and there is no commitment to make similar donations over a period of several years. In this way we would hope to avoid conflict with bodies like AMIRA who generally require more substantial sponsorship and a 2-3 year commitment.

We feel that funds could best be directed to Honours degree students or even M.Sc. students as these short term projects generally cannot be funded by AMIRA. The resulting research and the graduates should then make a worthwhile contribution to exploration geophysics in Australia.

We believe that such a research fund, properly administered, could further the long term aims of ASEG by supporting exploration geophysics research. This support could be in the form of scholarships, commissioned research, grants to individuals or companies etc. - the decisions would rest with the committee which should include representation from academia, industry, CSIRO and AMIRA.

The Federal Executive would like to hear from the membership at large if you have any opinions on this important issue. The Memorandum and Articles of Association of ASEG have served us well and we do not lightly undertake to change them. At present however, we see no negative aspects to this proposal but a positive way to further the aims of our society in supporting exploration geophysics.



R.J. SMITH

President

PROFESSIONAL DIRECTORY

14a



geoterrex
PTY LTD

GEOPHYSICAL CONTRACTORS
and CONSULTANTS

AIRBORNE

- Cesium Vapour Magnetics
- Radiometrics (256 channels)
- Barringer INPUT EM

HELICOPTER SPECIALISTS

- Gravity-Inertial Positioning
- Gravity-Conventional
- Magnetism Radiometrics

GROUND

- Gravity
- IP/Resistivity
- EM-37 TEM
- Pulse — EM
- Max Min II
- Drill Hole
- Electrical
- Equipment
- Rentals

COMPUTER PROCESSING INTERPRETATION & MODELLING

AGENTS FOR GEONICS and TRACK ETCH

13 WHITING ST.
ARTARMON, NSW. 2064

PHONE 02 438 3866
TELEX AA 25505

BEVAN DOCKERY

Consulting Geophysicist

B A Dockery & Associates Pty Ltd

7 Gregory Street

WEMBLEY WA 6014

Telephone: (09) 381 8652
Western Australia

Seismic and General Geophysical Services

Pty Ltd

273 Stirling Street
Perth WA 6000

Electromagnetic Surveys — EM37

Ground & helicopter gravity

Magnetics — Seismic refraction — electrical

High Resolution Seismic: Mini Sosie

Telephone: (09) 328 8844

Telex: AA92588



KIM FRANKCOMBE

Geophysical Consultant

239 Maqill Road

Maylands

Adelaide 5069

South Australia

Telephone: (08) 332 5090

AH (08) 31 5760



ZONGE ENGINEERING

& RESEARCH ORGANIZATION

AUSTRALIA PTY. LTD

*Electrical surveys for petroleum, mining,
and environmental concerns*

- IP, CR, Resistivity
- TEM
- CSAMT

*Computer data analysis, interpretation,
consulting*

Geophysical instrumentation sales and service

242 Glen Osmond Road, Fullarton, S.A. 5063

Phone: (08) 338 1559 Telex: AA88713 ABCENT



Innovative Technological

Geo-exploration

25 Forest Avenue, Rostrevor, South Australia 5073
Telephone: (08) 336 7114

Kuang Koo Sing

Geo-exploration Consultant

Specialising in

- Structural interpretation
- Basin Analysis
- Play Generation
- Acreage acquisition
- Cooper/Eromanga
- Indonesia
- Malaysia
- Thailand

SEARCH

EXPLORATION SERVICES PTY. LTD.

Peter Elliott M.Sc.

Managing Director
Chief Geoscientist

242 Glen Osmond Road,
Fullarton 5063
South Australia

Telephone (08) 79 3305
Fax (08) 79 6351
Telex AA 88713



**McSKIMMING GEOPHYSICS
INTERNATIONAL PTY. LTD.**

Peter McSkimming B.E.

SIROTEM (Surface & Drillhole), Gravity, Magnetics

35 THE BOULEVARD,
BELLEVUE HEIGHTS, SOUTH AUSTRALIA 5050
NATIONAL (08) 278 5759
INTERNATIONAL +61 8 2785759

PROFESSIONAL DIRECTORY

18 Knebworth Avenue
Perth, W.A. 6000

Tel (09) 328 1539

TOM KERR
Consulting Geophysicist

Project generation, interpretation,
management



GEOSOURCE INC.
EXPLORATION PRODUCTS DIVISION

PURCHASE
RENTAL
SERVICE
ENGINEERING

15a

BOREHOLE LOGGING EQUIPMENT

SEISMIC INSTRUMENTS

CABLES AND GEOPHONES

83 Jijaws Street, Telephone: 07 - 376 5188
Sumner Park, 4074. International: 61 - 7 - 376 5188
Brisbane Queensland. Facsimile: 61 - 7 - 376 6626
Australia. Telex: 145070

SCINTREX

6 Tramore Place
Killarney Heights, Sydney
Phone 451 5367
Telex 26859

1031 Wellington Street
West Perth
Phone 321 6934
Telex 92353 Fax 4811201

**CONTRACT GEOPHYSICAL SURVEYS,
INSTRUMENT SALE & HIRE**

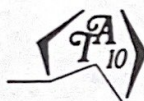
Induced Polarization with Spectral Analysis, Resistivity,
Magnetic Induced Polarization methods (MIP, RRMIP &
MMR)
Electromagnetic methods (VLF - E, VLF - M, Genie,
Horizontal Loop)
Analytical Chemistry, LUMINEX, Physical Properties, Gravity,
Magnetics, Radiometrics, Drillhole & Airborne Methods.

WONGELA GEOPHYSICAL

GEOPHYSICAL CONTRACTORS AND CONSULTANTS

LINDSAY N. INGALL Managing Director

22 KURRABA ROAD, NORTH SYDNEY, N.S.W. 2060
TELEPHONES: 92-1788 957-6788



TESLA-10 Pty Ltd
PERTH - WESTERN AUSTRALIA

**AIRBORNE SURVEY PLANNING
GEOPHYSICAL DATA PROCESSING
INSTRUMENT RENTALS**

41 KISHORN ROAD, APPLECROSS 6153
TELEPHONE (09) 364 8444 TELEX AA 95366

TC S technical computer systems

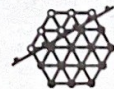
Consulting Services, Seismic Plotting and
Digitizing, VAX and PDP 11 Dial Up Facilities,
Gridding and Contouring, Log Digitizing and
Plotting.

237 Glen Osmond Road,
Fremville,
South Australia 5063

Telephone (08) 79 8424

**CSIRO
Exploration Geoscience**
Better methods and Instruments
See us at stands 33 & 34

Division of Exploration Geoscience
51 Delhi Rd, North Ryde, NSW 2113
PO Box 135
Tel: (02) 897 8666
Fax: (02) 897 8909



**SATTELEGER INGENIEURBÜRO
FÜR ANGEWANDTE GEOPHYSIK**

Interpretive Seismic Processing system ISP
data base, migration, modeling, mapping

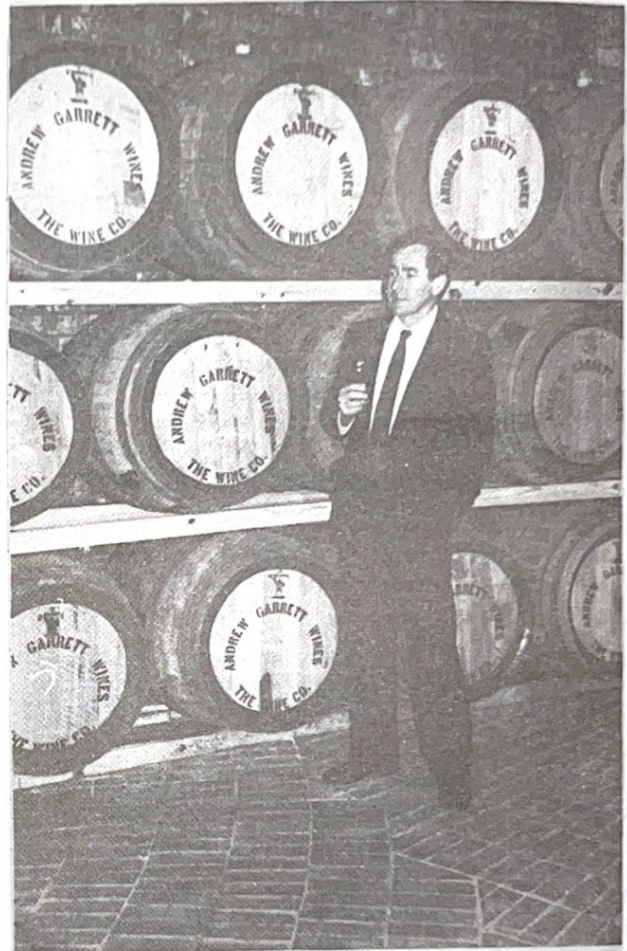
P.O. Box 1606 - Marienstrasse 3 Phone (0 59 31) 1 80 69
4470 Meppen Telex 17 5931 811 - SIAG D
Germany F.R. Cables SIAG Meppen

BUILDING UP TO ADELAIDE '88



THEY SAID IT WAS HERE SOMEWHERE!

THE WORRIES OF ORGANISATION!




WHO CARES?

MEET THE CHALLENGE
leave nothing unattempted in '88

**ASEG/SEG
INTERNATIONAL GEOPHYSICAL
CONFERENCE & EXHIBITION**

**Feb. 14-21, 1988
Adelaide, Australia**


1788 - 1988
Australia Bicentenary
Voyage of Discovery

ASEG '88
P.O. Box 753
Norwood,
S.A. 5067
Ph: (08) 332 4068

REMINDER

January 1988

A few vacancies still exist for the following Workshops, Short Courses and Engineering Seminar which are being held either side of the joint ASEG/SEG Adelaide '88 Conference. Refer to the Registration Brochure for details or phone or write to Muriel Ellis of Ellisservice Convention Management, P.O. Box 753, Norwood, South Australia 5067. Telephone (08) 332-4068.

W.1 EM WORKSHOP...FEBRUARY 13-14, 1988 \$280 all-inclusive
Limited to 35 participants

Venue: Raywood Conference Centre, Bridgewater ('live in').
 Chairman: Michael Asten of B.H.P. Minerals.

W.2 DOWNHOLE GEOPHYSICS, FEBRUARY 20-21, 1988 \$280 all-inclusive
Limited to 35 participants

Venue: Raywood Conference Centre, Bridgewater (live-in).
 Chairmen: Tom Edie of Aberfoyle Resources and Ted Tyne of the Geological Survey of N.S.W.

W.3 AIRBORNE GEOPHYSICS SHORT COURSE \$250
FEBRUARY 20-21, 1988

Venue: University of Adelaide, Mawson Laboratory Building.
 Chairman: Graham Butt, Geotrex Ltd, NSW

W.4 ENGINEERING GEOPHYSICS SEMINAR \$175 (incl. Lunch)
FEBRUARY, 13-14, 1988

Venue: University of Adelaide, Mawson Laboratory Building.
 Chairman: Kim Frankcombe

SEG CONTINUING EDUCATION COURSES

A few places still remain in the following Courses which normally cost at least \$US385 for SEG Members in the U.S.A. Don't miss this unrepeatable chance to participate at a registration price pitched to merely cover the expense of bringing these eminent experts to Adelaide. Venue: University of Adelaide, Mawson Laboratory Building. (Approach from Victoria Drive). 9.00am to 5.00pm each day - plan to arrive not later than 8.45am on Day One.

SEG.1 VERTICAL SEISMIC PROFILING \$250
FEBRUARY 13 & 14, 1988

Course Instructor: Robert R. Stewart, Senior Research Geophysicist with Veritas Software Ltd and a lecturer with the Continuing Education Program of the SEG.

SEG.2 MULTI-COMPONENT SEISMIC EXPLORATION \$250
FEBRUARY 20 & 21, 1988

Course Instructors:
 Michael D. McCormack, Director of the Seismic Interpretation Techniques Group in the Geophysical Research Dept of ARCO Resources Technology Company, U.S.A., and --
 Robert H. Tatham, a research consultant with Texaco U.S.A.'s Houston Research Center.

SEG.3 SEISMIC DATA ACQUISITION \$250
FEBRUARY 19 & 20, 1988*

Please note change of date from 20-21/2/88 as published in Registration Booklet.
 Course Instructor: Marvin Hewitt, who retired in July 1986 after 36 years with AMOCO.

BAD.1 ADVANCED GEOLOGICAL TECHNIQUES IN \$250
SEISMIC INTERPRETATION FEBRUARY 13 & 14, 1988

Venue: University of Adelaide, Mawson Laboratory Building. 9.00am-5.00pm each day.
 Plan to arrive not later than 8.45am on Day One.

Course Instructor: Dr Mike Badley, consultant with Badley, Ashton & Associates Ltd, U.K.

PROGRAM

[ACC] -- THE ADELAIDE CONVENTION CENTRE, North Terrace (west of The Adelaide Casino and Railway Station) is the main venue for the Conference and Trade Exhibition. The Conference Registration Desk is at all times located in the Main Foyer of The Convention Centre.

All lunches will be served at the Centre in or adjacent to the Trade Exhibition Area. The Welcome Reception at the Convention Centre also incorporates the Official Opening of the Trade Exhibition. All parallel sessions will be conducted in The Adelaide Convention Centre.

[AFT] - THE ADELAIDE FESTIVAL THEATRE, King William Road (a 5 minutes' walk from The Adelaide Convention Centre, behind the Adelaide Casino) is the venue for the Opening and Closing Plenary Sessions. The Closing Cocktail Party will be held in the Adelaide Festival Centre's Banqueting Room.

MAIN CONFERENCE PERIOD

SUNDAY FEBRUARY 14

1200-2030	REGISTRATION DESK OPEN (Main Foyer)	[ACC]
1630	SPEAKERS' & CHAIRMEN'S BRIEFING (Hall C)	[ACC]
1700-2030	TRADE EXHIBITION OPEN (Halls A, B, E & Meeting Rooms 1 & 2)	[ACC]
1800	OFFICIAL OPENING OF TRADE EXHIBITION	[ACC]
1800-2000	WELCOME RECEPTION in TRADE EXHIBITION AREA. (sponsored by SHELL AUSTRALIA) [Guest tickets \$18 each]	[ACC]
<u>FREE EVENING</u>	Group bookings for theatre/restaurants arranged on request.	

MAIN CONFERENCE PERIOD (Continued)

MONDAY FEBRUARY 15

0800-1800	REGISTRATION DESK OPEN	[ACC]
0830-0845	STROLL DOWN TO ADELAIDE FESTIVAL THEATRE	
0845	TAKE SEATS IN MAIN THEATRE	[AFT]
	OPENING PLENARY SESSION	[AFT]
0900	Conference Chairman's Address (Reg Nelson)	
0915	Official Opening of the Conference (Jim Kirk, Chairman Australian Bicentennial Authority)	
	Welcome Addresses:	
0930	. Bob Smith, President ASEG	
0945	. Lee Lawyer, President SEG	
1030	Morning Tea	
	Keynote Addresses:	
1100	. Norman R. Paterson, Paterson, Grant & Watson Ltd, Canada	
1145	. Ian Story, Meares & Philips Ltd, NSW	
1215	MAKE WAY BACK TO ADELAIDE CONVENTION CENTRE View Trade Exhibition.	[ACC]
	Lunch served in Exhibition Area.	[ACC]
1330-1430	PARALLEL SESSIONS	[ACC]
1430-1500	Afternoon Tea in Trade Exhibition Area	[ACC]
1500-1700	PARALLEL SESSIONS	[ACC]
<u>FREE EVENING</u>	Optional Twilight Cruise aboard M.V. "Captain Matthew Flinders" Showboat, with Dinner (\$45 per person)	

TUESDAY FEBRUARY 16

0800-1800	REGISTRATION DESK open	[ACC]
0800-1800	TRADE EXHIBITION open	
0900-1030	PARALLEL SESSIONS	[ACC]
1030-1100	Morning Tea in Trade Exhibition Area	[ACC]
1100-1230	PARALLEL SESSIONS	[ACC]
1230-1400	VISIT TRADE EXHIBITION	[ACC]
	Lunch in Trade Exhibition Area	[ACC]
1400-1530	PARALLEL SESSIONS	[ACC]
1530-1600	Afternoon Tea in Trade Exhibition Area	[ACC]
1600-1700	PARALLEL SESSIONS	[ACC]
<u>FREE EVENING</u>	Optional Social Programme, including return transport:	
a.	Ayers House Tour, Harp & Flute Musicale/Soiree & Supper	(\$20)
b.	The Buffalo Sailing Ship Museum & Seafood Restaurant	(\$40)
c.	The Tunnels, Old Lion Hotel, Restaurant & Disco	(\$40)

WEDNESDAY FEBRUARY 17

0800-1800	REGISTRATION DESK open	[ACC]
0800-1800	TRADE EXHIBITION open	[ACC]
1000-1800	TRADE EXHIBITION - OPEN TO THE PUBLIC	[ACC]
0900-1030	PARALLEL SESSIONS	[ACC]
1030-1100	Morning Tea in Trade Exhibition Area	[ACC]
1100-1230	PARALLEL SESSIONS	[ACC]
1230-1400	VISIT TRADE EXHIBITION	[ACC]
	Lunch in Trade Exhibition Area	[ACC]
1400-1530	PARALLEL SESSIONS	[ACC]
1530-1600	Afternoon Tea in Trade Exhibition Area	[ACC]
1600-1700	PARALLEL SESSIONS	[ACC]
1900	MAKE OWN WAY TO RUNDLE MALL, CENTRAL ADELAIDE SHOPPING DISTRICT.	
1915-2000	PRE-DINNER DRINKS, RENAISSANCE CENTRE ARCADE, RUNDLE MALL.	
2000-2400	CONFERENCE DINNER with ENTERTAINMENT & DANCING, RENAISSANCE CENTRE.	
	[Guest tickets \$48 each]	

THURSDAY FEBRUARY 18

0800-1800	REGISTRATION DESK open	[ACC]
0900-1030	PARALLEL SESSIONS	[ACC]
1030-1100	Morning Tea in Trade Exhibition Area	[ACC]
1100-1230	PARALLEL SESSIONS	[ACC]
1230-1400	LAST CHANCE TO VISIT TRADE EXHIBITION	[ACC]
	Lunch served in Trade Exhibition Area	
1330-1345	MAKE OWN WAY TO ADELAIDE FESTIVAL THEATRE	
1345	TAKE SEATS IN MAIN THEATRE	[AFT]
	<u>CLOSING PLENARY SESSION</u>	[AFT]
	Keynote Addresses:	
1400	. Katharine West	
1430	. Marvin Hewitt	
1500	. David Tucker	
1530	Afternoon Tea (Main Theatre Foyers)	
1600	AWARD PRESENTATIONS	
	INVITATION TO 1989 ASEG CONFERENCE, MELBOURNE	
1645	CLOSING CEREMONY	
1700	CLOSE	
1730-1930	CLOSING COCKTAIL PARTY, Adelaide Festival Centre Banqueting Room	
	[Guest tickets \$18 each]	

TECHNICAL PROGRAM

TECHNICAL PROGRAM OUTLINE

Monday 15 February, 1988

- 0900 - 1030 OFFICIAL OPENING in Festival Centre - Chairman R. Nelson
 PLENARY SESSION - Distinguished Guests
 1030 - 1100 MORNING TEA in Festival Centre
 1100 - 1215 PLENARY SESSION - Keynote Address in Festival Theatre - N. Patterson, I. Story - Chairman R. Nelson
 1215 - 1330 LUNCH - Convention Centre

	HALL D	ROOM 5	HALL C	ROOM 4
1330 - 1500	Session 1A Seismic 35 Processing I 159 98	Session 1B Basin 147 Studies I 58 22	Session 1C Magnetics I 89 4 6	Session 1D Coal 47 96 37
1500 - 1530	AFTERNOON TEA in Trade Exhibition Area			
1530 - 1700	Session 2A Seismic 85 Processing 44 II 109	Session 2B Basin 106- Studies II 8 105	Session 2C Magnetics II 156 76 53	Session 2D Management 14- 74- 103-

Tuesday 16 February, 1988

	HALL D	ROOM 5	HALL C	ROOM 4
0900 - 1030	Session 3A Crustal 37 Studies I 81 91	Session 3B Seismic 99 Acquisition 88 I (Marine) 115	Session 3C E.M. I 127 104- 43	Session 3D Crosshole 124- tomography 143 57
1030 - 1100	MORNING TEA in Trade Exhibition Area			
1100 - 1230	Session 4A Crustal 112 Studies II 13 166-	Session 4B Seismic 24- Acquisition 39- II (Statics) 126-	Session 4C E.M. II 62 77 69	Session 4D Waste 80 Management 134 75
1230 - 1400	LUNCH			
1400 - 1530	Session 5A Seismic 25 Processing III 13 (C/Histories) 84-	Session 5B Seismic 144 Acquisition 67 III (Land) 5	Session 5C Geotechnical 82 34	Session 5D Electrical 93 148 49-
1530 - 1600	AFTERNOON TEA in Trade Exhibition Area			
1600 - 1700	Session 6A Seismic 21 Processing IV 83	Session 6B Seismic 33 Acquisition 167 IV (Instruments)	Session 6C Minerals 142- (Instrument- 160 ation)	Session 6D Closed

TECHNICAL PROGRAM

Wednesday 17 February, 1988

	HALL D	ROOM 5	HALL C	ROOM 4
0900 - 1030	Session 7A Seismic 152- Processing 63 V 61 (C/Histories)	Session 7B Closed	Session 7C Downhole 32 (Mineral) 70 128	Session 7D Geophysics 27 (Special 46 Papers) 164-
1030 - 1100	MORNING TEA in Trade Exhibition Area			
1100 - 1230	Session 8A Seismic 52 (General) 130 15	Session 8B Databases 70 154 66	Session 8C Minerals 79 (C/Histories 27 & New Devel 40 opments)	Session 8D VSP's 150 161- 16
1230 - 1400	LUNCH			
1400 - 1530	Session 9A Seismic 100 C/Histories 71- 118	Session 9B Three 138- Component 65 Seismic 7	Session 9C Geotechnical 55 (C/Histories) 10 165	Session 9D Workstations 38- 45 111
1530 - 1600	AFTERNOON TEA in Trade Exhibition Area			
1600 - 1700	Session 10A Seismic 86 C/Histories 163 11	Session 10B Closed	Session 10C Groundwater 72 (C/Histories) 95	Session 10D Closed
1900	CONFERENCE DINNER			

Thursday 18 February, 1988

	HALL D	ROOM 5	HALL C	ROOM 4
0900 - 1030	Session 11A Seismic 137- Processing 48 VI (Ampli- 153 tude vs Offset)	Session 11B Surface 113 Seismic 92 Tomography 151	Session 11C Non Seismic 157 Petroleum 2 Exploration 125	Session 11D Magnetic 110 Rock Proper- 116 ties 140
1030 - 1100	MORNING TEA in Trade Exhibition Area			
1100 - 1230	Session 12A Seismic 145 C/Histories 11 111 108	Session 12B Shear Waves 155 1 56	Session 12C Magneto 51 tellurics 122 117-	Session 12D Closed
1230 - 1400	LUNCH - Convention Centre			
1400 - 1530	PLENARY SESSION in Festival Theatre - Keynote Addresses - K. West, M. Hewitt, D. Tucker Chairman C. Branch			
1530 - 1600	AFTERNOON TEA in Festival Centre			
1600 - 1700	AWARD PRESENTATIONS AND CLOSING PLENARY SESSION in Festival Theatre. Chairman R. Nelson			

EXCURSIONS

OPTIONAL PRE- or POST-CONFERENCE EXCURSIONS

All tours start from Hilton International Hotel, 233 Victoria Square at the stated commencement time. Coaches proceed to Gateway Hotel, 150 North Terrace and pick up passengers from there 15 minutes later.

FRIDAY FEBRUARY 12 (0730) - SUNDAY FEBRUARY 14 (1730)

- A. Natural History Voyage on the sailing ship "FALIE", \$395
3 days, 2 nights - with sumptuous meals. (Limited to 18 passengers)

SATURDAY FEBRUARY 13

- A. Southern Vales Wineries Tour & Dinner at Hardy's Cellars, Reynella \$40
(1430-2300)
B. Dinner at Hardy's Cellars, Reynella (join up with group A 6.45pm) \$35
(1800-2300)

SUNDAY FEBRUARY 14 (0900-1630)

- A. Barossa Valley Wineries Tour & Lunch at Yalumba Winery, Angaston \$40
B. Adelaide Hills, Gumeracha Toy Factory, Birdwood Mill Motor Museum,
Hahndorf & Lunch at Birdwood \$40

TUESDAY FEBRUARY 16 (0700-1730)

- C(a) Spencer Gulf Voyage on the sailing ship "FALIE" \$75
Includes sumptuous lunch. (Limited to 50 passengers)

WEDNESDAY FEBRUARY 17 (0700-1630)

- C(b) Spencer Gulf Voyage on the sailing ship "FALIE" \$75
Includes sumptuous lunch. (Limited to 50 passengers)

FRIDAY FEBRUARY 19 (0730) - SUNDAY FEBRUARY 21 (1730)

- B. Natural History Voyage on the sailing ship "FALIE", \$395
3 days, 2 nights - with sumptuous meals. (Limited to 18 passengers)

ACCOMPANYING PERSONS' OPTIONAL PROGRAMME

MONDAY FEBRUARY 15

- A. 1000-1600 Carrick Hill/Mt Lofty House (includes lunch) \$40
B. 1300-1600 Hahndorf/Crafts (includes afternoon tea) \$25

TUESDAY FEBRUARY 16

- A. 0930-1630 Shopping/Sightseeing Tour (includes lunch) \$40
B. 1400-1700 Mt Lofty & Cleland Wildlife Park (includes afternoon tea) \$20

WEDNESDAY FEBRUARY 17 - 1000-1200 - Guided Walking Tours, incl. morning tea \$10

- A. North Terrace B. King William Road C. Courts

REFER TO REGISTRATION BROCHURE FOR MORE DETAILS OF OPTIONAL SOCIAL PROGRAMME.

COURSES & WORKSHOPS

1988 JOINT ASEG/SEG INTERNATIONAL CONFERENCE/EXHIBITION - ADELAIDE, AUSTRALIA
FEBRUARY 14-21, 1988

TIMETABLE

PRE-/POST-CONFERENCE COURSES & WORKSHOPS - (0900-1700 each day)

SATURDAY FEBRUARY 13 to SUNDAY FEBRUARY 14

- | | | |
|--------|---|--------------------------------|
| BAD.1 | Advanced Geological Techniques in Seismic Interpretation (Badley)
University of Adelaide, Mawson Laboratory Building
(approach from Victoria Drive) | Regular \$250
Student \$200 |
| SEG.1 | Vertical Seismic Profiling (Stewart)
University of Adelaide, Mawson Laboratory Building
(approach from Victoria Drive) | Regular \$250
Student \$150 |
| W.1 | E.M. 'Live-in' Workshop (Asten)
Raywood Conference Centre, Bridgewater | Regular \$280
Student \$200 |
| 7.45am | Coach picks up from Adelaide Casino, North Terrace | |
| 8.00am | " " " " Hilton International Hotel, Victoria Sq. | |
| W.4 | Engineering Geophysics Workshop/Seminar (Frankcombe)
University of Adelaide, Mawson Laboratory Building
(approach from Victoria Drive) | Regular \$175
Student \$100 |

FRIDAY FEBRUARY 19 TO SATURDAY FEBRUARY 20

- | | | |
|-------|---|--------------------------------|
| SEG.3 | Seismic Data Acquisition (Hewitt)
University of Adelaide, Mawson Laboratory Building
(approach from Victoria Drive) | Regular \$250
Student \$150 |
|-------|---|--------------------------------|

SATURDAY FEBRUARY 20 TO SUNDAY FEBRUARY 21

- | | | |
|--------|--|--------------------------------|
| SEG.2 | Multi-Component Seismic Exploration (McCormack/Tatham)
University of Adelaide, Mawson Laboratory Building
(approach from Victoria Drive) | Regular \$250
Student \$150 |
| W.2 | Down Hole Geophysics 'Live In' Workshop (Eadie/Tyne)
Raywood Conference Centre, Bridgewater | Regular \$280
Student \$200 |
| 7.45am | Coach picks up from Adelaide Casino, North Terrace | |
| 8.00am | " " " " Hilton International Hotel, Victoria Sq. | |
| W.3 | Airborne Geophysics Short Course (Butt)
University of Adelaide, Mawson Laboratory Building
(approach from Victoria Drive) | Regular \$250
Student \$150 |

WORKSHOPS

W.1 EM WORKSHOP...FEBRUARY 13-14, 1988
Limited to 35 participants

\$280 all-inclusive

Venue: Raywood Conference Centre, Arbury Park, Bridgewater 5155.
 Phone: 08.339-1339.

Raywood Conference Centre is situated in historic grounds with formal gardens, surrounded by native vegetation. It is just 25 minutes' drive from Adelaide into the Adelaide Hills (via the South Eastern Freeway.) Accommodation is provided in comfortable single rooms with study facilities and hand basins. Showers and toilet facilities are available on each floor of the dormitory block which is only a short distance from the main conference and dining centre.

This 'live in' workshop is being chaired by Mr Michael Asten of BHP Minerals. It will include such topics as EM image processing techniques, case histories, inversion techniques, instrumentation, EM/IP and instrumental effects, and "hands on" interpretation of various data sets. Workshop leaders will include Australian and overseas experts. For further information call Mr Michael Asten on (03) 813.3666.

TIMETABLE

Day One

7.45am

8.00am

8.30am

9.00am-1.00pm

1.00pm

Coach picks up from outside Adelaide Casino, North Tce
 Coach picks up from outside Hilton International Hotel,
 233 Victoria Square, Adelaide.

Arrive Raywood

Session One

Depth of effective exploration in EM sounding

(Brian Spies, ARCO Oil & Gas, USA)

Multi-loop modelling software on PC

(Jim MacNae, Lamontage Geophysics, Canada)

Current filament inversion software on PC

(Andrew Duncan, Mincor, Vic.)

Inductive/galvanic responses

(Greg Newman, University of Utah, USA)

Image processing techniques in data

(Peter Elliott, Billiton Aust., SA)

Data plotting conventions -- General discussion

Demonstration of Zonge processing package on PC

(Van Reed, Zonge Engineering & Research Organisation, SA)

Lunch

WORKSHOP ONE (Saturday February 13 & Sunday February 14, 1988) ...cont'd

Day One (cont'd)

- 2.00pm-5.30pm Session Two
 Capabilities of present instrumentation (with examples)
 : Sirotek - Roger Henderson, Geo Instruments, NSW
 : UTEM - Jim MacNae, Lamontage Geophysics, Canada
 : Zonge GDP16 - Ken Zonge, Zonge Engineering & Research, SA
 : EM 37 - tba
 : Crone Digital - tba
 Discussion on future directions
 : Actual advances in development
 : Wish list
 5.30pm Break/Evening Meal
 7.30pm-late Demonstrations on PCs and 68020 workstations
 Free-flowing discussion

Day Two

- 7.30am Breakfast
 9.00am-12.30pm Session Four
 Loop effect, polarization smoke-ring
 (Marcus Flis, CRAE, NSW; Michael Asten, BHP Utah Minerals,
 Vic.; Richard Smith, University of Toronto, Canada)
 Loop effect and instrumental effects
 (Brian Spies, ARCO Oil & Gas, USA)
 IP in 3D TEM modelling
 (Greg Newman, University of Utah, USA)
 Detector self-response
 (Dick Irvine, BHP Utah Minerals, Vic.)
 12.30pm Lunch
 1.30pm- 4.00pm Session Five
 Interpretation of selected examples of surface and down
 hole TEM data, working in small groups with PC software
 supplied. Feel free to bring your own data.
 4.00pm- 4.30pm Pack-up, and board coach.
 4.30pm Coach departs Raywood for City Hotels. Coach waits for
 those workshop participants who are also registering
 for the ASEG/SEG Adelaide '88 Conference and continues
 on to the Adelaide Convention Centre where they can register.
 6.00pm- 8.00pm Welcome Reception incorporating official opening of the
 Trade Exhibition being held in conjunction with the Conference.

W.2 DOWNHOLE GEOPHYSICS, FEBRUARY 20-21, 1988
Limited to 35 participants

\$280 all-inclusive

Venue: Raywood Conference Centre, Arbury Park, Bridgewater 5155.
 Phone: 08.339-1339.

Raywood Conference Centre is situated in historic grounds with formal gardens, surrounded by native vegetation. It is just 25 minutes' drive from Adelaide into the Adelaide Hills (via the South Eastern Freeway.) Accommodation is provided in comfortable single rooms with study facilities and hand basins. Showers and toilet facilities are available on each floor of the dormitory block which is only a short distance from the main conference and dining centre.

This is a 'live in' workshop which will be co-chaired by Mr Tom Eadie of Aberfoyle Resources and Mr Ted Tyne of the Geological Survey of N.S.W. It will include such topics as IP, EM, Radar, Seismic and Magnetics. Participants are encouraged to bring interesting and/or problem data for discussion. For further information call Mr Tom Eadie on (03) 882.2226.

TIMETABLE

<u>Day One</u>	
7.45am	Coach picks up from outside Adelaide Casino, North Tce
8.00am	Coach picks up from outside Hilton International Hotel, 233 Victoria Square, Adelaide.
8.30am	Arrive Raywood
9.00am	Downhole EM - current state of the art and case histories. (led by Tom Eadie)
10.30am	Morning Tea
11.00am	Downhole EM - the future. (led by Dr Mike Asten, BHP Utah Minerals, Vic.)
1.00pm	Lunch
2.00pm	Downhole IP - Instrumentation, applications and pitfalls. (led by Ted Tyne)
3.30pm	Afternoon Tea
4.00pm	Downhole IP - Case histories. (led by Ted Tyne)
5.30pm	Break/Evening Meal
7.30pm-late	Problem solving in separate IP and EM groups Group discussions, over a glass (or two) of wine.
<u>Day Two</u>	
7.30am	Breakfast
9.00am	Downhole magnetics. (led by Terry Hoschke, Geopeko, NSW)
10.30am	Morning Tea
11.00am	High resolution techniques (radar, seismic)
12.30pm	Lunch
1.30pm	Specialist groups for problem solving, discussion, etc.
3.00pm	Afternoon Tea in Session Room
3.15pm- 4.00pm	Wind-up - Discussion
4.00pm- 4.30pm	Pack-up, and board coach.
4.30pm	Coach departs Raywood for City Hotels and Adelaide Airport.

W.3 AIRBORNE GEOPHYSICS SHORT COURSE, FEBRUARY 20-21, 1988 \$250

VENUE: University of Adelaide.
 Mawson Laboratory Building (approach from Victoria Drive)

TIMETABLE

Day One

9.00am	Introductory Remarks - Graham Butt, Geoterrex Pty Ltd, NSW.
9.10am	Navigation & Positioning - Tim Crago, Nortech Surveys (Canada) Inc.
10.10am	Discussion
10.25am	Morning Tea
10.55am	Airborne Gravity - John Brozena, U.S. Naval Research Laboratory, Washington, D.C.
11.55am	Combined Discussion (Gravity and Positioning)
12.15pm	Lunch
1.45pm	Fixed Wing TEM Equipment, Data Acquisition and Data Processing Procedures - Steve Thomson, Geoterrex Ltd, Ottawa, Canada.
2.15pm	Discussion
2.25pm	Fixed Wing TEM Interpretative Data Processing - Martin Schneider, Geoterrex Pty Ltd, Sydney.
2.55pm	Discussion
3.05pm	Afternoon Tea
3.35pm	Helicopter EM Equipment and Data Acquisition Procedures - Doug Fraser, Dighem Ltd, Canada
4.05pm	Discussion
4.15pm	Helicopter EM Data Processing and Interpretation Procedures - Doug Fraser, Dighem Ltd, Canada
4.45pm	Discussion
5.00pm	Close

Day Two

9.00am	Gamma Spectrometry; Equipment and Data Acquisition Procedures - Graham Jenke, Kevron Geophysics, Perth.
9.40am	Discussion
9.55am	Morning Tea
10.25am	Gamma Spectrometry; Data Processing - Paul Wilkes, Engineering Computer Services, Perth.
11.05am	Discussion
11.20am	Gamma Spectrometry; Data Presentation & Interpretation - BHP, Melbourne (Presenter t.b.a.)
12.00pm	Discussion
12.15pm	Lunch
1.45pm	Moniteq's Fluorescent Line Imager (FLI); Applications - Dr Don Pridmore, Aerodata/World Geoscience Corporation.
2.25pm	Discussion
2.40pm	The Daedalus 1260/1268 Multi-Spectral Scanner - Graeme Lacey, National Safety Council of Australia, Sale, Victoria.
3.20pm	Discussion
3.35pm	Afternoon Tea
4.05pm	Image Processing of Remotely Sensed Data Sets - Steve Webster & Ian Campbell, Austirex International Ltd, Syd
4.45pm	Discussion
5.00pm	Close

W.4 ENGINEERING GEOPHYSICS SEMINAR,
FEBRUARY 13-14, 1988

\$175 (incl. Lunch)

VENUE: University of Adelaide
 Mawson Laboratory Building (approach from Victoria Drive)

This Seminar will cover many areas of geotechnical and mining engineering geophysics. It will attempt to highlight the relevance (if any) of geophysics to the engineer or geologist predicting performance figures.

Presentations will be from geophysicists on an application basis and engineers and geologists on a problem basis. Ample time will be allowed for discussion and questions. The seminar is supported by the Geomechanics Society and should be of interest to all engineering geologists, mining engineers, geotechnical engineers and engineering geophysicists. For further details, please contact Kim Frankcombe on (08) 332.5633.

TIMETABLE

Day One

Chaired by Kim Frankcombe:

9.00am- 9.05am	Opening Welcome by K.M. Frankcombe.
9.30am	Engineering Geophysics: a Geophysicist's view - Bob Whitley, University of NSW, NSW.
10.00am	Engineering Geophysics: a Geologist's view - Professor David Stepelton, S.A.I.T., SA.
10.30am	Engineering Geophysics: an Engineer's view - Professor Robin Fell, University of NSW, NSW.
11.00am	Morning Tea "Geophysics Case Histories by Geophysicists on an application basis"
11.30am	Magnetics - John Stanley, University of New England, NSW.
12.00pm	Gravity - Lockey Creswell, Dept of Housing & Construction, VIC.
12.30pm	Electromagnetism - Jock Buselli, C.S.I.R.O., NSW.
1.30pm	Lunch
2.00pm	Downhole sonic & neutron logging - Alan Davies, Utah, QLD.
2.30pm	Downhole logging, Electrical - Ted Tyne, NSW Dept of Min. Res., NSW.
3.00pm	Radar - Tony Siggins, C.S.I.R.O., VIC.
3.30pm	Afternoon Tea
4.00pm	Refraction: Seismic - Dereke Palmer, NSW Dept of Min. Res., NSW.
4.30pm	Reflection: Seismic - Geoff Pettifer, Vic. Geological Survey, VIC.
5.00pm	Shear wave: Seismic - Bob Whitley, University of NSW, NSW.
5.30pm	Cross hole: Seismic - Bob Whitley, University of NSW, NSW.

W.4 ENGINEERING GEOPHYSICS SEMINAR, FEBRUARY 13-14, 1988 (Cont'd)

Day Two

9.00am- 9.30am	Port Bonython Jetty - Charles Fitzhardinge, Fitzhardinge & Woodburn, SA.
10.00am	Detection of clay in Riverside Colliery - Wayne Stasinowsky, BHP Engineering, NSW.
10.30am	Overburden characteristics - Andrew Kremore, ETSA, SA.
11.00am	Morning Tea
11.30am	Rippability, subsurface profile - Iain Gibson, Golder & Associates, VIC.
12.00pm	Detection of Cavities - George Rumbens/Jim Williams, Dept of Main Roads, NSW.
12.30pm	Fracture patterns as an aid to blasting - Cameron McKenzie, Julius Kruttschnitt Res. Centre, QLD.
1.30pm	Lunch
2.00pm	Assessment of road materials and sites - Graeme Granger, RCA, VIC.
2.30pm	Cavity detection/Tunnel lining/Fracture detection - Malcolm Bridges, SMEC, NSW.
3.00pm	Integrated site investigation including Tyndal study - Pat McGregor, Coffey, NSW.
3.30pm	Afternoon Tea
4.00pm	Downhole sonic and neutron logging, Part I: Prediction of rock properties. - Peter Hatherly and Greg McNally, A.C.I.R.L., NSW.
4.30pm	Downhole sonic and neutron logging, Part I: Geotechnical applications for surface coal mining. - Alan Davies and D.A. McManus, BHP Utah, QLD.

COURSES

SEG CONTINUING EDUCATION COURSE

SEG.1 VERTICAL SEISMIC PROFILING \$250
FEBRUARY 13 & 14, 1988

VENUE: University of Adelaide.
 Mawson Laboratory Building (approach from Victoria Drive)

TIME: 9.00am to 5.00pm each day.
 Please plan to arrive at the University not later than 8.45am.

PARKING: Closest public car park is in John Martin's Department Store Building, 217 North Terrace, Adelaide.

This two-day course provides participants with a comprehensive review of state-of-the-art developments and provides hands-on experience in the interpretation of VSP data. Workshop sessions combine VSP data, surface seismic data, well logs and synthetic seismograms for a unified subsurface interpretation. Case studies will be emphasised.

Anyone who has ever wanted to measure the behavioural characteristics of a propagatory seismic wavefront deep in a stratigraphic section, understand it, and map it, will want to attend this course!

The Course Instructor is Robert R. Stewart who graduated from the University of Toronto in 1978 with a B.Sc. in physics and mathematics. He received a Ph.D. in geophysics from the Massachusetts Institute of Technology in 1983. Dr Stewart is currently Senior Research Geophysicist with Veritas Software Ltd and is also a lecturer with the Continuing Education Program of the SEG. He is a member of APEGGA, SEG, EAEG, Sigma XI and the CSEG where he is past editor of the Journal.

Enquiries should be directed to:

ASEG/SEG Adelaide '88 Conference, C/- Ellisservice Convention Management,
 P.O. Box 753, Norwood, S.Australia, 5067. Telephone enquiries regarding
 registration can be directed to Muriel Ellis at that address (08) 332.4068.

SEG CONTINUING EDUCATION COURSE

SEG.2 MULTI-COMPONENT SEISMIC EXPLORATION \$250
FEBRUARY 20 & 21, 1988

VENUE: University of Adelaide.
 Mawson Laboratory Building (approach from Victoria Drive)

TIME: 9.00am to 5.00pm each day.
 Please plan to arrive at the University not later than 8.45am.

PARKING: Closest public car park is in John Martin's Department Store
 Building, 217 North Terrace, Adelaide.

Conventional P-wave seismic wave exploration technology utilises only a small fraction of the available information about sub-surface formations. Shear wave and converted compressional-to-shear wave surface seismic data offers a unique opportunity to estimate basic rock properties of formations when used in conjunction with P-wave data. This two-day course provides an overview of multi-component exploration seismology from the theoretical basics of elastic wave propagation in the real earth through the practical issues of shear wave data collection, processing and analysis.

The course is designed to provide geophysicists and geologists with the fundamental seismic data acquisition, processing and interpretation skills necessary to effectively utilise multicomponent exploration technology. Extensive mathematics are not required.

Attendees will be provided with P-wave and SH-wave data sections shot along common surface profiles for two workshop exercises. The task for small teams of participants will be to correlate common reflection events on the two seismic sections above and below the target horizon and to compute VP/VS ratios by measuring interval transit times. After determining the lateral variations in the VP/VS from the seismic data, the participant will use information provided in the lectures to interpret these horizontal VP/VS changes in terms of variation in lithology, porosity and/or pore fluid type.

Course Instructors:

Michael D. McCormack has worked since 1980 in the Geophysical Research Department of ARCO Resources Technology Company. He is presently Director of the Seismic Interpretation Techniques Group which is responsible for developing interactive computer technology with particular emphasis on the uses of multi-component seismic data for lithology and porosity estimation.

Robert H. Tatham is a research consultant with Texaco U.S.A.'s Houston Research Center. His interests include research and development into techniques of improving processing and interpretation of seismic data, and applying these techniques to determine subsurface geological properties for petroleum exploration and reservoir development.

Enquiries should be directed to:

ASEG/SEG Adelaide '88 Conference, C/- Ellisservice Convention Management,
 P.O. Box 753, Norwood, S.Australia, 5067. Telephone enquiries regarding
 registration can be directed to Muriel Ellis at that address (08) 332.4068.

POSTER PAPERS

SEG CONTINUING EDUCATION COURSESEG.3 SEISMIC DATA ACQUISITION
FEBRUARY 20 & 21, 1988

\$250

VENUE: University of Adelaide.
Mawson Laboratory Building (approach from Victoria Drive)

TIME: 9.00am to 5.00pm each day.
Please plan to arrive at the University not later than 8.45am.

PARKING: Closest public car park is in John Martin's Department Store Building, 217 North Terrace, Adelaide.

The constraints placed on the integrity of seismic reflection data and the distorting and corrupting mechanisms that degrade the fidelity of seismic data during acquisition are presented. This seminar provides information necessary to quantitatively design the source mechanisms, recording geometries, and recording parameters contributing to maintaining the bandwidth of and enhancing the signal-to-noise ratio of the recorded seismic reflection data.

The Course Instructor is Marvin Hewitt who is also presenting a keynote address at the Conference. Marvin has presented papers at numerous technical meetings, both domestic and international; he has published in "Geophysics" and "The Leading Edge". He retired in July 1986 after 36 years with AMOCO.

Enquiries should be directed to:

ASEG/SEG Adelaide '88 Conference, C/- Ellisservice Convention Management,
P.O. Box 753, Norwood, S.Australia, 5067. Telephone enquiries regarding
registration can be directed to Muriel Ellis at that address (08) 332.4068.

BAD.1 ADVANCED GEOLOGICAL TECHNIQUES IN \$250
SEISMIC INTERPRETATION FEBRUARY 13 & 14, 1988

VENUE: University of Adelaide
 Mawson Laboratory Building (approach from Victoria Drive)

TIME: 9.00am to 5.00pm each day.
 Please plan to arrive at the University not later than 8.45am.

PARKING: Closest public car park is in John Martin's Department Store
 Building, 217 North Terrace, Adelaide.

A two-day workshop course on the application of new advanced geological techniques to seismic interpretation. The course, based on a balanced combination of lectures and work sessions, demonstrates the application of advanced geological techniques to real seismic data and interpretation problems, including examples from Australia.

The Course content is:

Unconformity Analysis - Practical application of crustal scale and theoretical dynamic structural models as interpretive tools for the analysis of unconformities.

Fault Analysis - Application of newly developed structural analysis techniques to: section restoration involving extensional faults; quantitative analysis of faults and faults systems using displacement gradient contouring; and advanced contouring and map verification.

The Course Instructor is Dr Mike Badley, a consultant with the U.K. company Badley, Ashton & Associates Ltd. He has been involved in exploration both as a geologist and seismic interpreter in North West European basins for the last 15 years. Since 1983 more than 1,300 geologists and geophysicists have attended his courses "Practical Seismic Interpretation", "Practical Exploration Techniques" and "Advanced Exploration Techniques" held at numerous locations in Europe, North America, S.E. Asia and Australia.

Enquiries should be directed to:

ASEG/SEG Adelaide '88 Conference, C/- Ellisservice Convention Management,
 P.O. Box 753, Norwood, S.Australia, 5067. Telephone enquiries regarding
 registration can be directed to Muriel Ellis at that address (08) 332.4068.

POSTER PAPERS

The following is a summary of the Poster Papers to be presented at the conference exhibition hall.

1. PEDIN: The Australian Petroleum Exploration Database.

Bruce Wyatt - Wyatt & Associates.
John Moss - BMR
Sandy Radke - BMR

2. Field Examples of The Time Domain IP Curves in French Brittany Massive Sulphide Orebodies (FRANCE).

M.J.Bernard - Bureau de Recherches
Geologiques et Minieres.

3. Aspect of Fault Management in Compresional Tectonics.

Jorgen Rasmussen -
Philip E. Neri - Geco Asia Pacific.
P.Miller -

4. Information and Forecasting Services for Exploration Geophysicists.

- IPS Radio and Space Services.

5. The Morphology of Geomagnetic Disturbances.

6. Geophysical Survey Index of Victoria.

J.Ashworth - Department of Industry,
A.J.Willocks - Technology, and
G.R.Pettifer - Resources, Victoria.

7. Two Dimensional Surface Impedance Measurements at VLF

W.X.Wu - School of Science,
D.V.Thiel - Griffith University.

8. An Updated Look at Cost Effective Ways to Acquire Seismic Data in Remote Areas With Case Histories.

J.Kruppenbach - Energy Analysts.

9. Cost Effective Marine Static Application.

J.Kruppenbach - Energy Analysts.

10. The New Stress/Strain Ellipsoid.

K.S. Kuang - Innovative Technological
Geo-exploration.

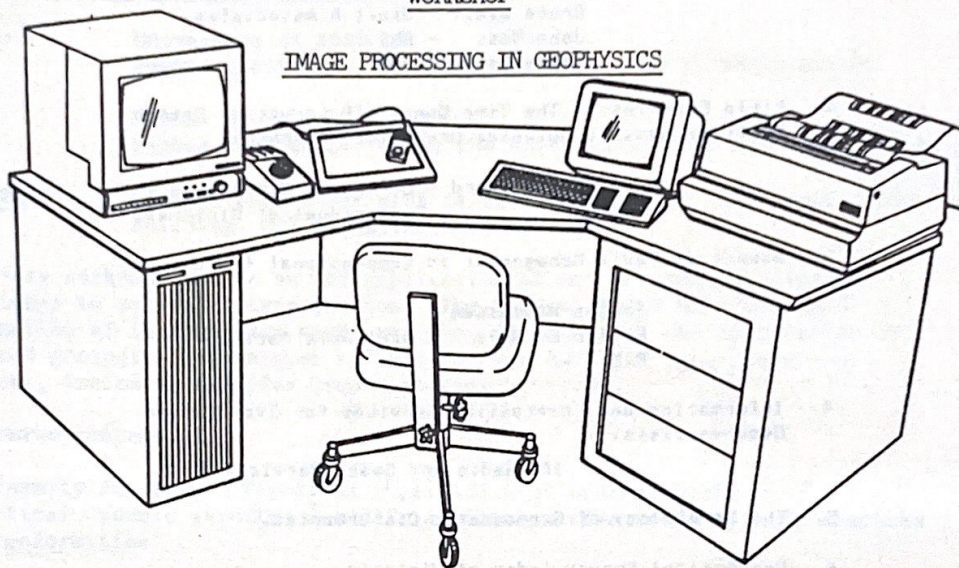
11. Finite Element Modelling of Crestal Faulting on Anticlinal Traps.

Jim Leven - BMR,Geology,Geophysics.

12. On-site Interpretation of TEM Data With a Personal Computer.

Charles H.Stoyer - Interpex LTD.
Bridget E.Tatlor - Interpex LTD.

***** WORKSHOP *****

IMAGE PROCESSING IN GEOPHYSICS

FRIDAY 19TH FEBRUARY, 1988

SOUTH AUSTRALIAN CENTRE FOR
REMOTE SENSING

Innovation House, 1st Avenue
Technology Park, The Levels
South Australia 5095
Telephone: (08) 260 0134 Telex: AA 88556
Department of Services and Supply

A one day workshop will be held at the South Australian Remote Sensing Centre, Technology Park: Friday, 19th Feb. '88. Curriculum will include: Introduction to remote sensing and image processing techniques; Processing of Geophysical data including magnetics and electromagnetic data; Data sets covered will include Landsat MSS and TM; SPOT; Aeromagnetics; and Sirotem. Maximum attendance : 9 only

I would like to attend the Image Processing Workshop at Technology Park

Payment details: \$120/person

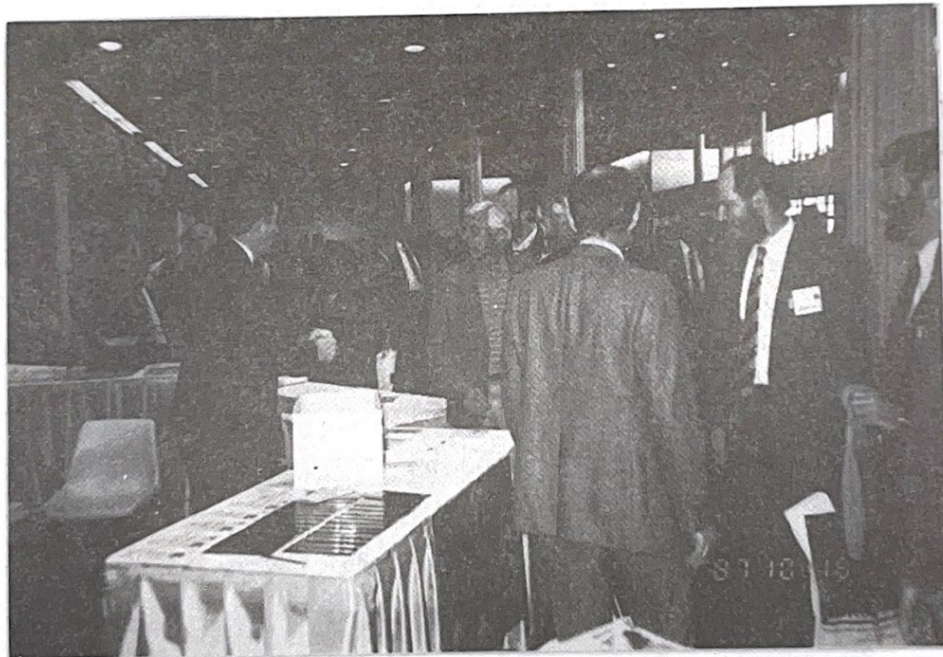
Name: cheque no. :
* card no. :
Address for Correspondence:
.....

* Amex, Diners, Master, Visa, Bankcard.

ASEG AT SEG - NEW ORLEANS



BOB "PICK A BOX" SMITH SHOWS HIS TALENTS



"NO, I DON'T WANT TO BUY ANY
DENHAM GENES"

HOW TO RUN AN EXHIBITION



"THIS IS HOW THEY USED TO DO IT ON THE SEIS BOATS"



"OH DEAR, I SEEM TO HAVE MY KNOTS IN A BALL"

ASEG EXHIBITION BOOTH -- ADELAIDE CONFERENCE

The ASEG Exhibition Booth at next month's Adelaide Conference will be featuring a photographic display of "Geophysics in Australia".

Material to be used in the display includes:

1. Historical photographs of early survey work.
2. Recent photographs illustrating the extremes of survey conditions in Australia.
3. Humorous.

Could anyone having photographs fitting these categories please contact Nick Dunstan on (08) 2747617.

Advanced Exploration Techniques: A Workshop Course

by
Dr. Mike Badley

A five-day workshop course on the practical application of advanced seismic interpretation and geological techniques to exploration and production problems facing geologists and geophysicists working in basins both off- and onshore. The course, based on a balanced combination of lectures and work sessions, demonstrates the application of advanced techniques using seismic sections, well and map data from a wide variety of basin types including examples from Australia.

COURSE CONTENT

Basin Analysis

Practical application of crustal scale models as interpretive tools to analyse basin evolution, subsidence, uplift, unconformities, thermal history, etc.

Seismic Interpretation and Structural Analysis

Seismic interpretation - resolution problems, structural styles, velocity analysis, depth conversion and map migration.
Sediment decompaction - methods and applications.
Section balancing - methods.
Fault analysis - including a new method - fault displacement gradient contouring.
Salt structure analysis - a new approach.
Footwall uplift and unconformity analysis.
Advanced contouring - techniques.

WHO SHOULD ATTEND

The course is designed for geologists and geophysicists engaged in interpretation and technical management, and other professionals involved in exploration and production. The course is advanced and assumes a working knowledge of basic seismic interpretation techniques.

INSTRUCTOR

Dr. Mike Badley has been involved in exploration both as a geologist and seismic interpreter in North West European basins for the last 16 years. Since 1983 more than thirteen hundred geologists and geophysicists have attended his courses *Practical Seismic Interpretation* and *Practical Exploration Techniques*, held at numerous locations in Europe, North America, S.E. Asia and Australia.

WHERE, WHEN AND HOW MUCH ?

The course will be presented in Adelaide during the week 25-29 July 1988. The price of the course is A\$1500.

Further details or enrollments can be made by telephone, telex or fax to:

Badley, Ashton & Associates Ltd.,
Aveland House, Queen Street, Spilsby,
Lincolnshire, PE 23 5JX, England.

Tel (0790) 52278; Fax (0790) 53818; Tlx 377854

(We are moving at Easter but new telephone and fax numbers are not yet available, so telex if you have a problem contacting us.)

Volume 1, Theory

Edited by Misac N. Nabighian

By ordering your copy now, you can save 20 percent off the regular price. Just complete the form below and return it with payment to SEG to take advantage of this one-time price reduction. Orders must be postmarked on or before March 1, 1988.

ISBN 0-931830-51-6

PRICES AFTER MARCH 1:	SEG Members	\$75.00
	Nonmembers	\$94.00

For a detailed description of **ELECTROMAGNETIC METHODS IN APPLIED GEOPHYSICS**, see the reverse side.



Society of Exploration Geophysicists

SHIPPING INFORMATION:

Name: _____

Address: _____

Phone: _____

Member of SEG ☐ Yes ☐ No

Orders must include payment
and be postmarked by
_____ March 1, 1988

Mail orders to:
Society of Exploration Geophysicists
P.O. Box 702740
Tulsa, OK 74170-2740 U.S.A.
Attn: BOOK ORDER DEPT.

Number of Copies	Catalog Number	SEG Publication Title	Amount in US \$
	R-67	Electromagnetic Methods in Applied Geophysics, Vol. 1	
METHOD OF PAYMENT: <input type="checkbox"/> Check <input type="checkbox"/> Master Card <input type="checkbox"/> VISA Expires _____ Card Account Number <div style="display: flex; gap: 5px;"> <div><div></div><div></div><div></div><div></div></div> <div><div></div><div></div><div></div><div></div></div> <div><div></div><div></div><div></div><div></div></div> <div><div></div><div></div><div></div><div></div></div> </div>			POSTAGE AND HANDLING: In U.S.A. \$4.00 for initial item \$2.00 for each additional item Outside U.S.A. \$8.00 for initial item \$4.00 for each additional item Airmail or special handling available upon request at additional cost.
Signature _____			Subtotal US \$ Add 4% on Oklahoma orders 7% on Tulsa orders for Sales Tax Postage and handling TOTAL AMOUNT ENCLOSED US \$ Prices are subject to change without notice

ELECTROMAGNETIC METHODS IN APPLIED GEOPHYSICS

VOLUME 1, THEORY

Over the last two decades there have been significant advances in electromagnetic (EM) methods of exploration, as evidenced by the extensive research carried out by various companies, universities, and government research organizations; by the large number of papers published on the subject; and by the numerous workshops on various EM topics held in conjunction with SEG's Annual Meetings.

This volume presents the mathematical and physical foundations common to all EM methods. It is devoted to the presentation of the theoretical basis of EM methods, to help facilitate the understanding of the physics involved and to provide a

limited amount of interpretational aids. The chapters on numerical and analog modeling elaborate on ways of enlarging these capabilities. The chapters on electrical properties of rocks and on the resistivity characteristics of geologic targets help envisage the different kinds of ground structures that may be dealt with and the effect of various factors on the observed conductivities of rocks. The basic principles of modern instrument design are incorporated under the heading "Detection of Repetitive Electromagnetic Signals." Finally, Volume 1 concludes with a chapter on the principles of EM inversion, as a first step toward achieving the elusive goal of automatic interpretation of electromagnetic data.

CONTENTS

Chapter 1 FUNDAMENTALS OF THE ELECTROMAGNETIC METHOD

Charles M. Swift, Jr.

DIFFERENCES IN ARRAY CONFIGURATION — DIFFERENCES IN TRANSMITTER WAVEFORM — DIFFERENCES IN TECHNIQUES TO REMOVE THE PRIMARY FIELD — DIFFERENCES IN INTERPRETIVE PARAMETER — THE FUTURE

Chapter 2 ROCK AND MINERAL PROPERTIES

George V. Keller

PHYSICAL LAWS, ELECTROMAGNETIC INDUCTION, AND ROCK PROPERTIES: Conductivity, Dielectric permittivity, Magnetic permeability — PROPERTIES OF MINERALS: Conductivity of metals and semiconductors, Dielectric properties of rock-forming minerals, Magnetic properties of minerals, Piezoelectric properties of minerals — PROPERTIES OF ROCKS: Mixtures of conductive minerals in host rocks, Dielectric permittivity — MEGASCOPIC CONSIDERATIONS

Chapter 3 RESISTIVITY CHARACTERISTICS OF GEOLOGIC TARGETS

G. J. Palacky

MASSIVE SULFIDE AND MAGNETITE DEPOSITS: Volcanic-associated massive sulfide deposits, Other types of massive sulfide deposits, Magmatic deposits of nickel, copper, and platinum, Iron formations — LINEAMENTS AND WEATHERED LAYERS: Mapping of lithology, Unconformity-related uranium deposits, Bauxite deposits, Lateritic nickel deposits, Kimberlites, Mapping of lineaments, Geothermal exploration — UNCONSOLIDATED SEDIMENTS AND SEDIMENTARY ROCKS: Unconsolidated sediments in glaciated terrains, Nonglaciated unconsolidated sediments, Sedimentary rocks, Coal and lignite prospecting — SEAWATER, AQUIFERS, AND PERMAFROST: Bathymetric charting, Mapping of freshwater-saltwater interface, Mapping of chemical pollution plumes, Permafrost — CONCLUSIONS — ACKNOWLEDGMENTS — REFERENCES

Chapter 4 ELECTROMAGNETIC THEORY FOR GEOPHYSICAL APPLICATIONS

Stanley H. Ward and Gerald W. Hohmann

SECTION 1, FUNDAMENTAL ELECTROMAGNETISM: Maxwell's equations in the time domain, The constitutive relations, Maxwell's equations in the frequency domain, The wave equations, Solutions of the wave equations, Dispersive electrical parameters, Polarization vectors, Schelkunoff potentials, Boundary conditions, Appendix 1.1 Expressions for Operators in Three Coordinate Systems: Vector Operators, Maxwell's equations, Mode decomposition — Appendix 1.2 Boundary Conditions: The integral forms of Maxwell's equations, Boundary conditions — SECTION 2, SOURCES IN UNBOUNDED MEDIA: Scalar Green's function, Time-domain Green's function, Point source of direct current, Harmonic electric dipole, Transient electric dipole, Harmonic magnetic dipole, Transient magnetic dipole, Harmonic line source, Transient line source, Tensor Green's functions — SECTION 3, REFLECTION AND REFRACTION OF PLANE WAVES: Snell's laws, Fresnel's equations, The plane-wave impedance of an n -layered isotropic earth, Magnetotelluric formulation for a 1-D earth — SECTION 4, FINITE SOURCES OVER A LAYERED HALF-SPACE: Complementary solution, General solution, Vertical magnetic dipole, Large horizontal loop, Horizontal magnetic dipole, Horizontal electric dipole, Long grounded wire, Line source of current, Computations — SECTION 5, BOUNDARY-VALUE PROBLEMS IN CYLINDRICAL COORDINATES: Basic solutions, A conducting cylinder in a uniform transverse electrostatic field, A permeable cylinder in a uniform transverse magnetostatic field, A conducting permeable cylinder in a uniform alternating magnetic field, A conducting permeable cylinder in a uniform transient magnetic field, A conducting cylinder in a plane-wave electromagnetic field, A conducting cylinder in the field of a line source — frequency domain, A conducting cylinder in

the field of a line source — time domain, Appendix 5.1 Properties of Cylinder Functions — Small argument asymptotes, Large argument asymptotes, Zeros of cylinder functions, Singularities of cylinder functions, The recurrence formulas — SECTION 6, BOUNDARY-VALUE PROBLEMS IN SPHERICAL COORDINATES: Basic solutions, Alternate solution of the Helmholtz equation in spherical coordinates, Integral solutions in spherical coordinates, A conducting sphere in a uniform electrostatic field, A permeable sphere in a uniform magnetostatic field, A conducting permeable sphere in a uniform alternating magnetic field, A conducting permeable sphere in a uniform transient magnetic field, A conducting sphere in a plane-wave field, A conducting sphere in the field of an alternating magnetic dipole, A conducting sphere in the field of a transient magnetic dipole, Appendix 6.1 Spherical Cylinder Functions: Derivation of the spherical Bessel functions, The Schelkunoff spherical Bessel functions — ACKNOWLEDGMENTS — REFERENCES

Chapter 5 NUMERICAL MODELING FOR ELECTROMAGNETIC METHODS OF GEOPHYSICS

Gerald W. Hohmann

DIFFERENTIAL INTEGRAL EQUATIONS: Time-domain equations, Frequency-domain equations, Direct current equations — METHOD OF WEIGHTED RESIDUALS — TWO-DIMENSIONAL MODEL AND SOURCE: Frequency-domain differential-equation methods, Finite-element techniques, Integral equation solution, Time-domain finite-difference solution — TWO-DIMENSIONAL MODEL: THREE-DIMENSIONAL SOURCE: Zero-frequency solutions, EM solutions — THREE-DIMENSIONAL MODELING: Volume integral-equation method, Thin-sheet solutions, Transient calculations, Differential equation solutions, Hybrid solutions — ACKNOWLEDGMENT — REFERENCES

Chapter 6 ELECTROMAGNETIC PHYSICAL SCALE MODELING

F. C. Frischknecht

THEORY OF ELECTROMAGNETIC SCALE MODELING — TYPES OF SCALE MODELS — PHYSICAL FACILITIES: Supporting structures, Design of tanks, Shielding against noise — SOURCES: Finite sources, Plane wave or uniform sources — PROBES — TRANSMISSION LINES — SIGNAL PROCESSING AND DATA ACQUISITION — TESTING AND CALIBRATION — MODEL MATERIALS: Properties of materials, Measurement of properties of model materials — REVIEW OF MODEL STUDIES: Historical development, Examples of instrumentation and facilities, Examples of results — DISCUSSION — REFERENCES

Chapter 7 DETECTION OF REPETITIVE ELECTROMAGNETIC SIGNALS

A. Becker and G. Cheng

THE BOXCAR INTEGRATOR — ANALOG DETECTION OF GEOPHYSICAL SIGNALS: General purpose equipment — DIGITAL DETECTION OF GEOPHYSICAL SIGNALS: The digital analogy detector, Uniform stacking detector, Digital lock-in — OPTIMIZATION OF DYNAMIC SYSTEMS — SUMMARY — ACKNOWLEDGMENTS — REFERENCES

Chapter 8 INVERSION OF CONTROLLED SOURCE ELECTROMAGNETIC DATA

Gerald W. Hohmann and Arthur P. Raiche

THE ELECTROMAGNETIC INVERSE PROBLEM: Integral equation formulation, Uniqueness, Construction of a solution, Appraisal — MODEL FITTING BY NONLINEAR OPTIMIZATION: Parameter estimation, Generalized inverse of a matrix, Mathematical representation of data and parameters, Measuring inversion performance, An example of joint inversion and the use of inversion statistics, Field example — MULTIDIMENSIONAL INVERSION: Simple models, Differential equation methods, Integral equation methods

JOHN HAIGH 1941 - 1988

How should we begin to describe the loss of a valued friend and colleague? What inadequate stringing together of words could properly tell of the vitality and zest for living that John Haigh possessed? A mere recitation of milestones in his professional career will yield an impression of a dedicated professional, but it does not give the grander vision. Nevertheless, the facts must be set down. The journey must be charted.

John graduated from the University of Tasmania in 1962 and joined the Bureau of Mineral Resources in 1963. During his years with the Bureau, he worked in the Metaliferous Section of the Geophysics Branch as a member and eventually party leader of various geophysical field parties. He was Geophysicist-in-charge of the Geophysical Observatory at Mawson, Antarctica from 1965 to 1966. His research from 1966 to 1969 into electronic processing of raw geophysical data and development of computer programs for the interpretation of magnetic data was to stand him in good stead for much innovative work later in his career. In 1969, John joined McPhar Geophysics Pty. Ltd., initially based in Kalgoorlie and then Perth, where he was in charge of contract and consulting activities for the group in Western Australia. He became Chief Geophysicist and Manager W.A. of McPhar in 1974, with responsibility for geophysical operations Australia-wide and in Southeast Asia.

Following the winding-up of McPhar's operations in 1975, he became one of the prime movers in the establishment of Geoex Pty. Ltd., which became a significant Australian-owned and -managed contracting group. John became Chief Geophysicist and provided the main technical leadership for the company. During the period 1978-1983, Geoex flew more than one million line kilometres of aeromagnetic and radiometric survey. Meanwhile, John was heavily involved in the development of digital data acquisition systems, computer interface programs and data processing and interpretation routines. He was Project coordinator for the combined Geoex-AMDEL SIROLOG project. Probably one of Geoex's most significant achievements was to undertake the commercial development and manufacture of the SIROTEM electromagnetic instrumentation, now sold and used worldwide. Falling commodity prices unfortunately undermined Geoex's position just as it was set to capitalise on much of John's innovation, and the company was forced to close in 1983, a short time after John had assumed the position of Managing Director. Shortly afterwards, he joined the Geophysics Branch of the South Australian Department of Mines and Energy as Principal Geophysicist in charge of Regional Geophysics, where his visionary approach to the needs of future exploration set the pace for the development of a comprehensive exploration database based on geographical information management systems. He continued to work on the applied development of SIROTEM, happily immersing

himself in field work as well as processing and interpretation. Much of his vision remains to be fulfilled, so far-reaching was it.

A member of both ASEG and SEG, John was a staunch supporter of professional society activities, serving as ASEG President for the South Australian Branch in 1980 and ASEG Conference Chairman in 1981. His strong support for the ASEG-GDF tape format standard led to his appointment as Chairman of the ASEG Standing Committee for Technical Standards in 1984, a position he held until 1987. At the time of his death, he was Co-Chairman of the ASEG/SEG International Geophysical Conference and Exhibition (Adelaide '88).

The whirl of vitality that he exuded filled his entire life, whether it was in yachting, skiing, orienteering, bushwalking or in devotion to his family. Our deepest sympathy and thoughts are with his wife, Louise and his children, Andrew, Sonja, Jason, Ben and Lisa.

Faced with a certain and oppressive sense of his mortality, he continued to live with a courage and equanimity of mind that even those of who knew his indomitable spirit could only wonder at. If any of us could fulfil the spirit of our conference theme, it was John.

'He left nothing unattempted.'

BOB SMITH
REG. NELSON