

v7.0



Overhauser

Magnetometer / Gradiometer / VLF (GSM-19 v7.0)

GEM's unique Overhauser system combines data quality, survey efficiency and options into an instrument that matches costlier optically pumped Caesium devices.

And the latest v7.0 technology upgrades provide even more value:

Data export in standard XYZ (i.e. line-oriented) format for easy use in standard commercial software programs

Programmable export format for full control over output

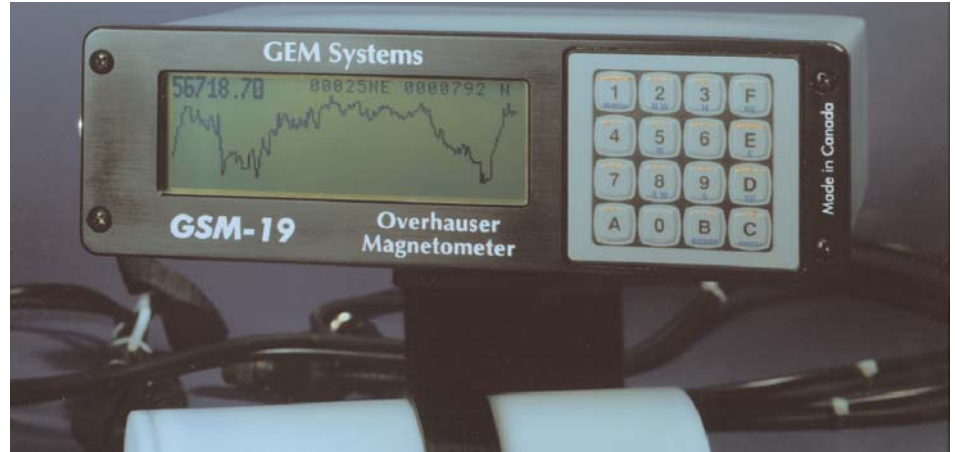
GPS elevation values provide input for geophysical modeling

**Enhanced GPS positioning resolution
<1.5m standard GPS for high resolution surveying
<1.0m OmniStar GPS
<0.7m for newly introduced CDGPS**

Multi-sensor capability for advanced surveys to resolve target geometry

Picket and line marking / annotation for capturing related surveying information on-the-go

And all of these technologies come complete with the most attractive savings and warranty in the business!



Overhauser (GSM-19) console with sensor and cable. Can also be configured with additional sensor for gradiometer (simultaneous) readings.

The GSM-19 v7.0 Overhauser instrument is the total field magnetometer / gradiometer of choice in today's earth science environment -- representing a unique blend of physics, data quality, operational efficiency, system design and options that clearly differentiate it from other quantum magnetometers.

With data quality exceeding standard proton precession and comparable to costlier optically pumped cesium units, the GSM-19 is a standard (or emerging standard) in many fields, including:

- o Mineral exploration (ground and airborne base station)
- o Environmental and engineering
- o Pipeline mapping
- o Unexploded Ordnance Detection
- o Archeology
- o Magnetic observatory measurements
- o Volcanology and earthquake prediction

Taking Advantage of the Overhauser Effect

Overhauser effect magnetometers are essentially proton precession devices -- except that they produce an order-of-

magnitude greater sensitivity. These "supercharged" quantum magnetometers also deliver high absolute accuracy, rapid cycling (up to 5 readings / second), and exceptionally low power consumption.

The Overhauser effect occurs when a special liquid (with unpaired electrons) is combined with hydrogen atoms and then exposed to secondary polarization from a radio frequency (RF) magnetic field.

The unpaired electrons transfer their stronger polarization to hydrogen atoms, thereby generating a strong precession signal -- that is ideal for very high-sensitivity total field measurements.

In comparison with proton precession methods, RF signal generation also keeps power consumption to an absolute minimum and eliminates noise (i.e. generating RF frequencies are well out of the bandwidth of the precession signal).

In addition, polarization and signal measurement can occur simultaneously -- which enables faster, sequential measurements. This, in turn, facilitates advanced statistical averaging over the sampling period and/or increased cycling rates (i.e. sampling speeds).

Other advantages are described in the section called, "GEM's Commercial Overhauser System" that appears later in this brochure.

Key System Components

Key components that differentiate the GSM-19 from other systems on the market include the sensor and data acquisition console. Specifications for components are provided on the right side of this page.

Sensor Technology

GEM's sensors represent a proprietary innovation that combines advances in electronics design and quantum magnetometer chemistry.

Electronically, the detection assembly includes dual pick-up coils connected in series opposition to suppress far-source electrical interference, such as atmospheric noise. Chemically, the sensor head houses a proprietary hydrogen-rich

liquid solvent with free electrons (free radicals) added to increase the signal intensity under RF polarization.

From a physical perspective, the sensor is a small size, light-weight assembly that houses the Overhauser detection system and fluid. A rugged plastic housing protects the internal components during operation and transport.

All sensor components are designed from carefully screened non-magnetic materials to assist in maximization of signal-to-noise. Heading errors are also minimized by ensuring that there are no magnetic inclusions or other defects that could result in variable readings for different orientations of the sensor.

Optional omni-directional sensors are available for operating in regions where the magnetic field is near-horizontal (i.e. equatorial regions). These sensors maximize signal strength regardless of field direction.

About GEM Advanced Magnetometers

GEM Systems, Inc. delivers the world's only magnetometers and gradiometers with built-in GPS for accurately-positioned ground, airborne and stationary data acquisition. The company serves customers in many fields including mineral exploration, hydrocarbon exploration, environmental and engineering, Unexploded Ordnance Detection, archeology, earthquake hazard prediction and observatory research.

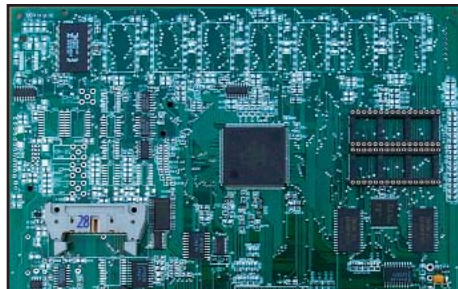
Key products include the QuickTracker™ Proton Precession, Overhauser and SuperSenser™ Optically-Pumped Potassium instruments. Each system offers unique benefits in terms of sensitivity, sampling, and acquisition of high-quality data. These core benefits are complemented by GPS technologies that provide metre to sub-metre positioning.

With customers in more than 50 countries globally and more than 25 years of continuous technology R&D, GEM is known as the only geophysical instrument manufacturer that focuses exclusively on magnetic technology advancement.

"Our World is Magnetic"



GEM Systems, Inc.
52 West Beaver Creek Rd., 14
Richmond Hill, ON
Canada L4B 1L9
Phone: 905-764-8008
Fax: 905-764-2949
Email: info@gemsys.ca
Web: www.gemsys.ca



Specifications

Performance

Sensitivity:	0.022 nT / $\sqrt{\text{Hz}}$
Resolution:	0.01 nT
Absolute Accuracy:	+/- 0.1 nT
Range:	15,000 to 120,000 nT
Gradient Tolerance:	< 10,000 nT/m
Samples at:	60+, 5, 3, 2, 1, 0.5, 0.2 sec
Operating Temperature:	-40C to +50C

Operating Modes

Manual: Coordinates, time, date and reading stored automatically at minimum 3 second interval.

Base Station: Time, date and reading stored at 1 to 60 second intervals.

Remote Control: Optional remote control using RS-232 interface.

Input / Output: RS-232 or analog (optional) output using 6-pin weatherproof connector.

Storage - 32 MB (# of Readings)

Mobile:	1,465,623
Base Station:	5,373,951
Gradiometer:	1,240,142
Walking Mag:	2,686,975

Dimensions

Console:	223 x 69 x 240 mm
Sensor:	175 x 75mm diameter cylinder

Weights

Console with Belt:	2.1 kg
Sensor and Staff Assembly:	1.0 kg

Standard Components

GSM-19 console, GEMLinkW software, batteries, harness, charger, sensor with cable, RS-232 cable, staff, instruction manual and shipping case.

Optional VLF

Frequency Range: Up to 3 stations between 15 to 30.0 kHz

Parameters: Vertical in-phase and out-of-phase components as % of total field. 2 components of horizontal field amplitude and total field strength in pT.

Resolution:	0.1% of total field
-------------	---------------------

