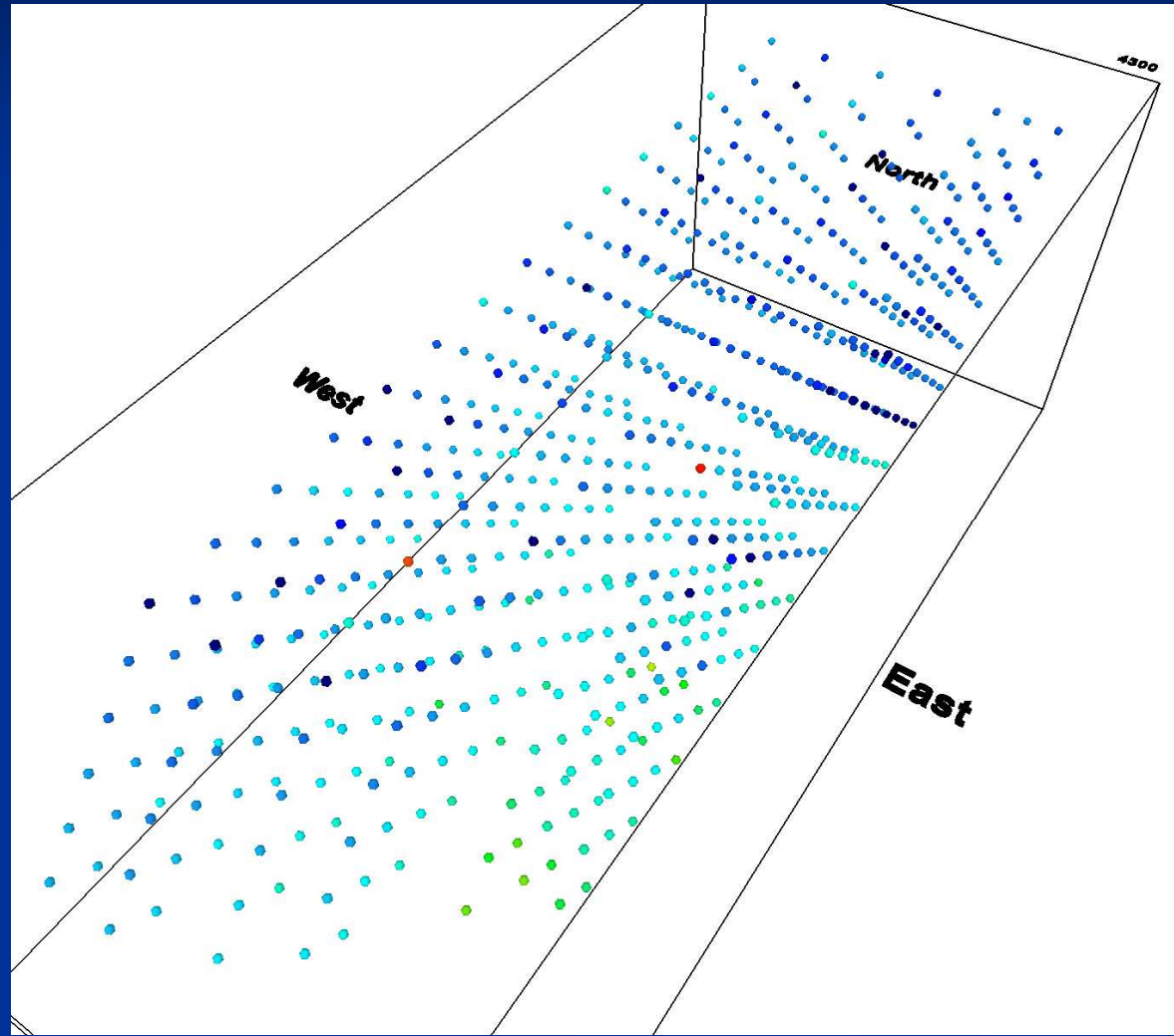


Centreline in 3D

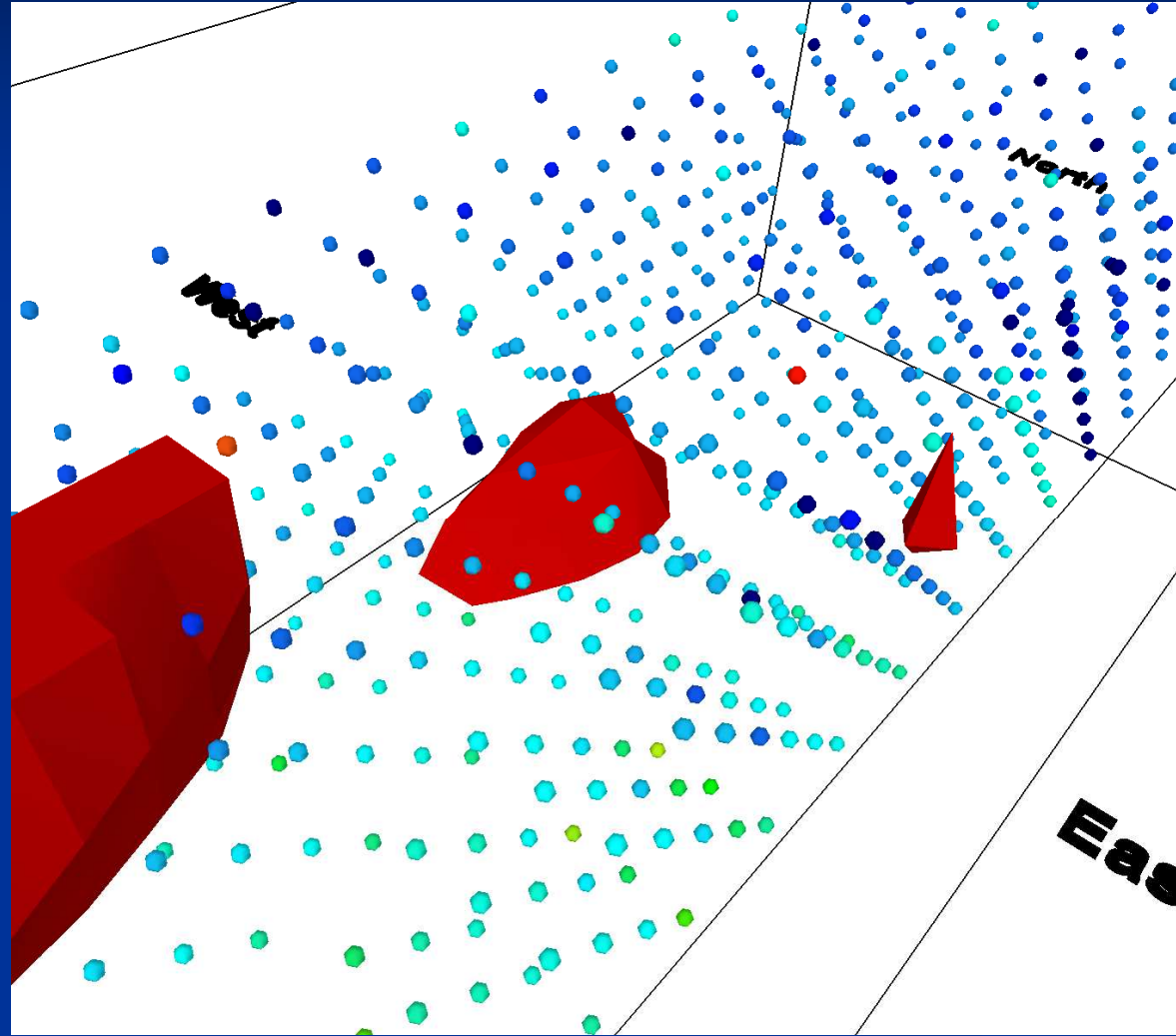
Alex Copeland

Offset dipole-dipole survey



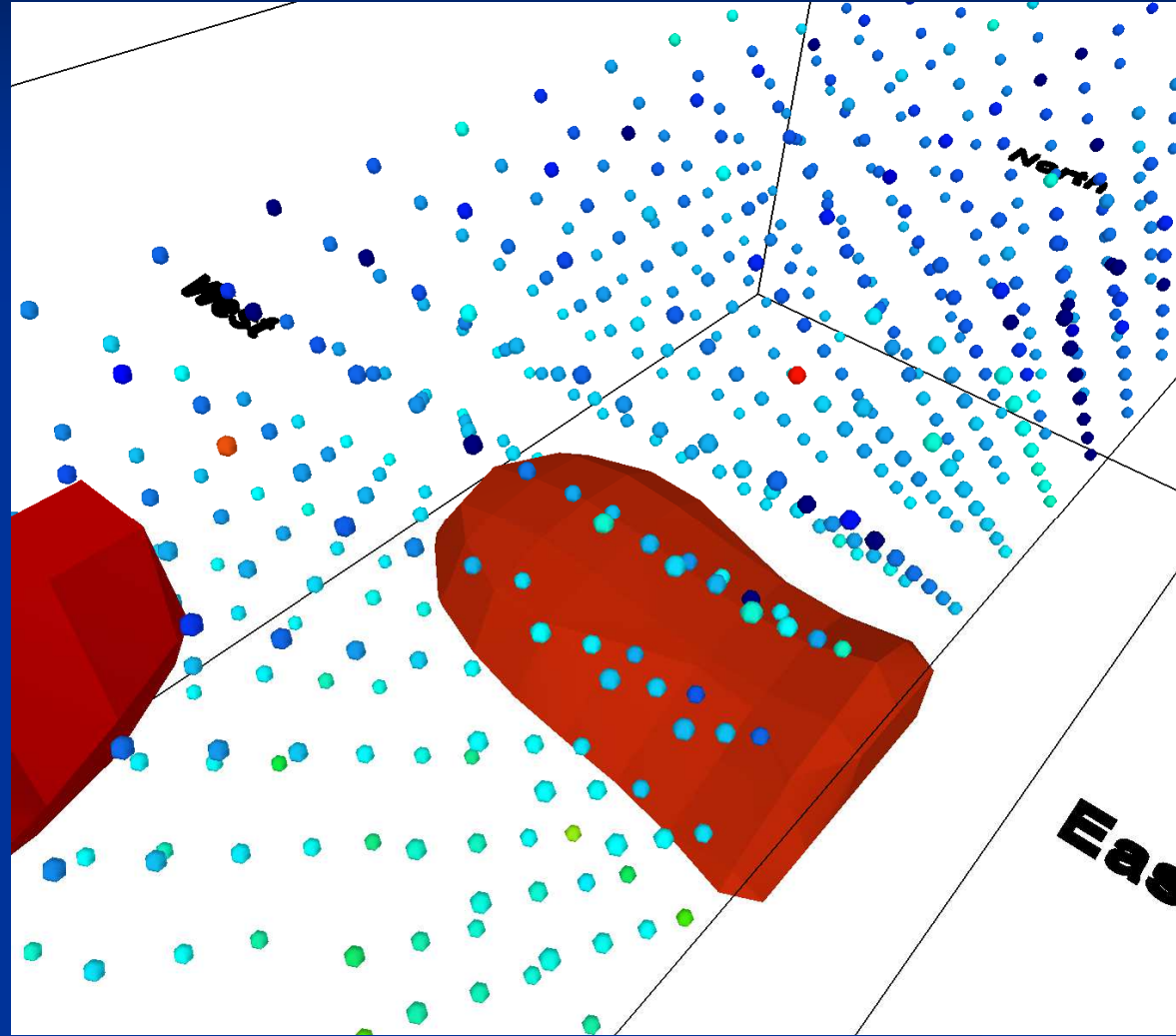
3D Pseudosection plot points for all transmitter and receiver electrodes

Offset dipole-dipole survey



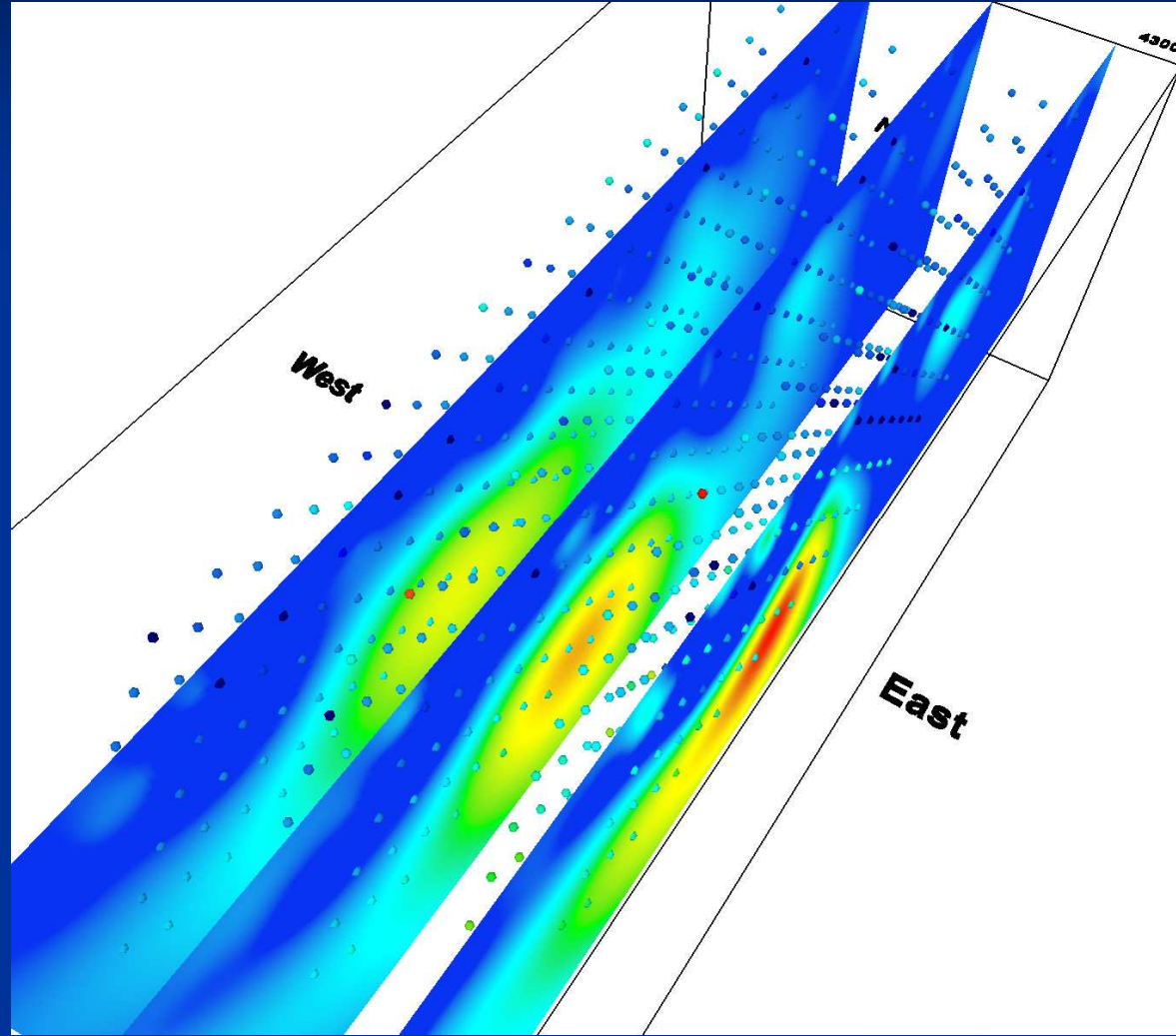
3D Inversion of only offset receiver lines

Offset dipole-dipole survey



3D Inversion of all inline and offset receiver lines

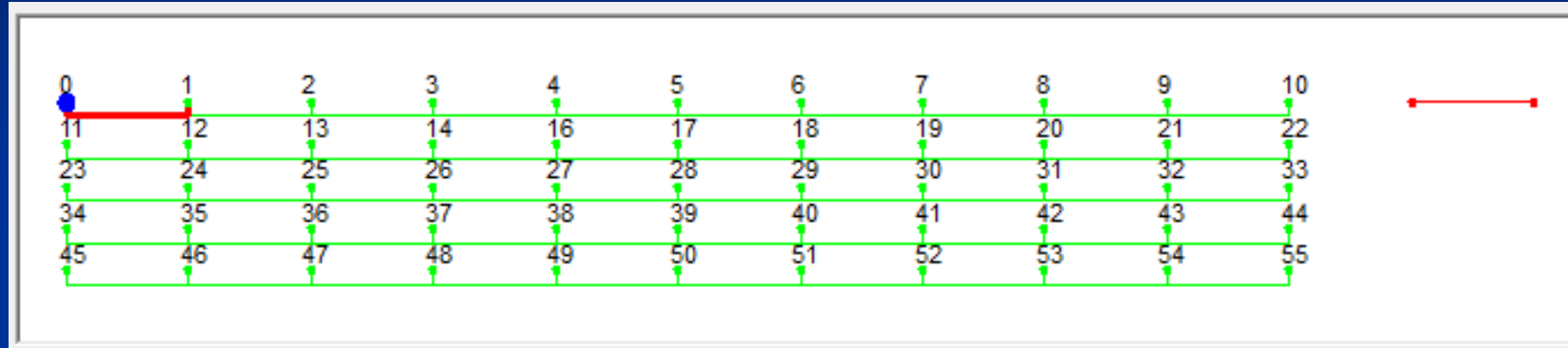
Offset dipole-dipole survey



2D Inversion of only inline receiver lines

Reading Polarity

Electrode layout



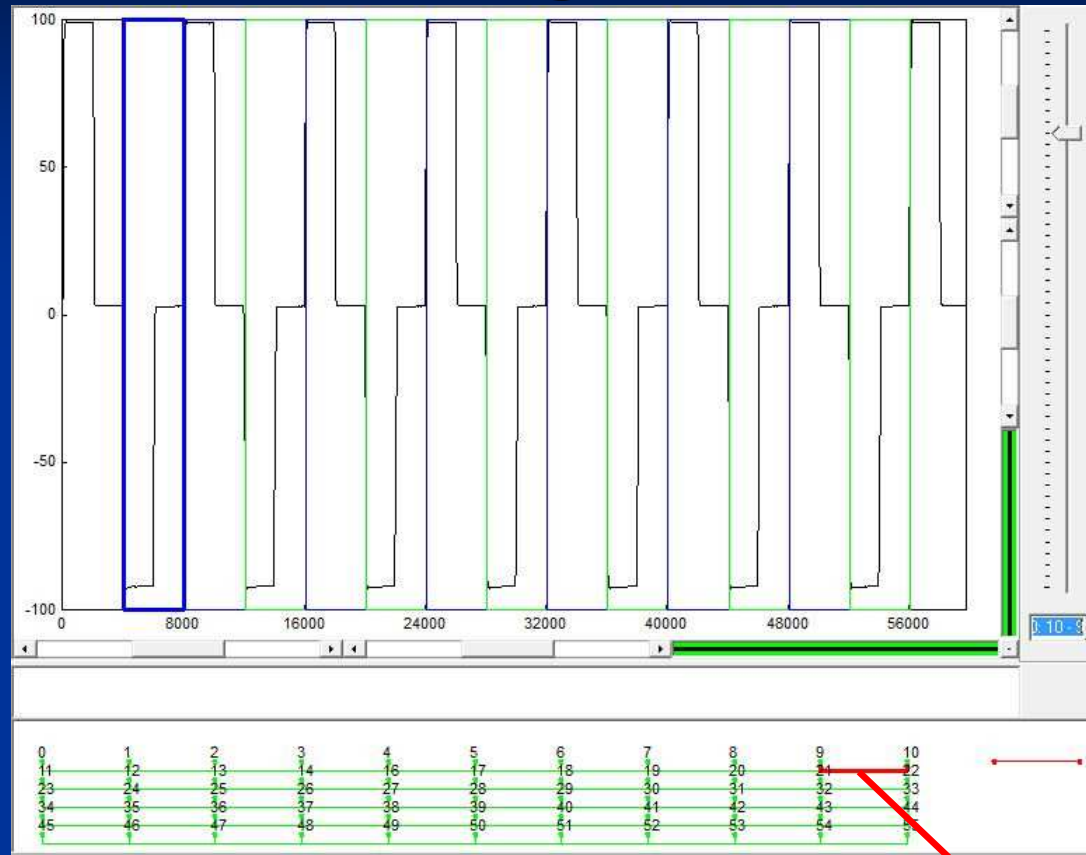
Geometric factor

	514000	514200	514400	514600	514800	515000	515200	515400	515600	515800
6477600	7.57576E-06	1.0101E-05	1.38889E-05	1.98413E-05	2.97619E-05	4.7619E-05	8.33333E-05	0.000166667	0.000416667	0.001666667
6477200	6.86062E-06	8.95906E-06	1.19771E-05	1.64508E-05	2.33028E-05	3.41407E-05	5.165E-05	7.91592E-05	0.0001123	8.72846E-05
6476800	5.1654E-06	6.37522E-06	7.90917E-06	9.81277E-06	1.20449E-05	1.4292E-05	1.55211E-05	1.31019E-05	1.91747E-06	-2.33899E-05
6476400	3.33757E-06	3.80068E-06	4.24614E-06	4.57631E-06	4.60336E-06	3.99924E-06	2.2621E-06	-1.2101E-06	-6.76732E-06	-1.37879E-05
6476000	1.90741E-06	1.9659E-06	1.92134E-06	1.70436E-06	1.22087E-06	3.59374E-07	-9.80886E-07	-2.82931E-06	-5.05541E-06	-7.29872E-06

Measured Vp

	514000	514200	514400	514600	514800	515000	515200	515400	515600	515800
6478400	1.6045	1.9292	2.5863	2.9907	3.4117	5.2871	6.3711	12.2023	21.9345	94.8468
6478000	0.9118	1.7712	1.9457	2.4999	2.844	3.6266	4.2828	5.0506	5.4126	-0.1373
6477600	1.008	1.1934	1.214	1.2617	1.4731	1.3885	0.7045	-0.4241	-2.5519	-5.4802
6477200	0.7819	0.6659	0.4305	0.3245	0.066	-0.0349	-0.5103	-1.423	-2.7265	-3.8695
6476800	0.3778	0.2734	0.1476	-0.0684	-0.2648	-0.5952	-1.0421	-1.5818	-2.071	-2.5102

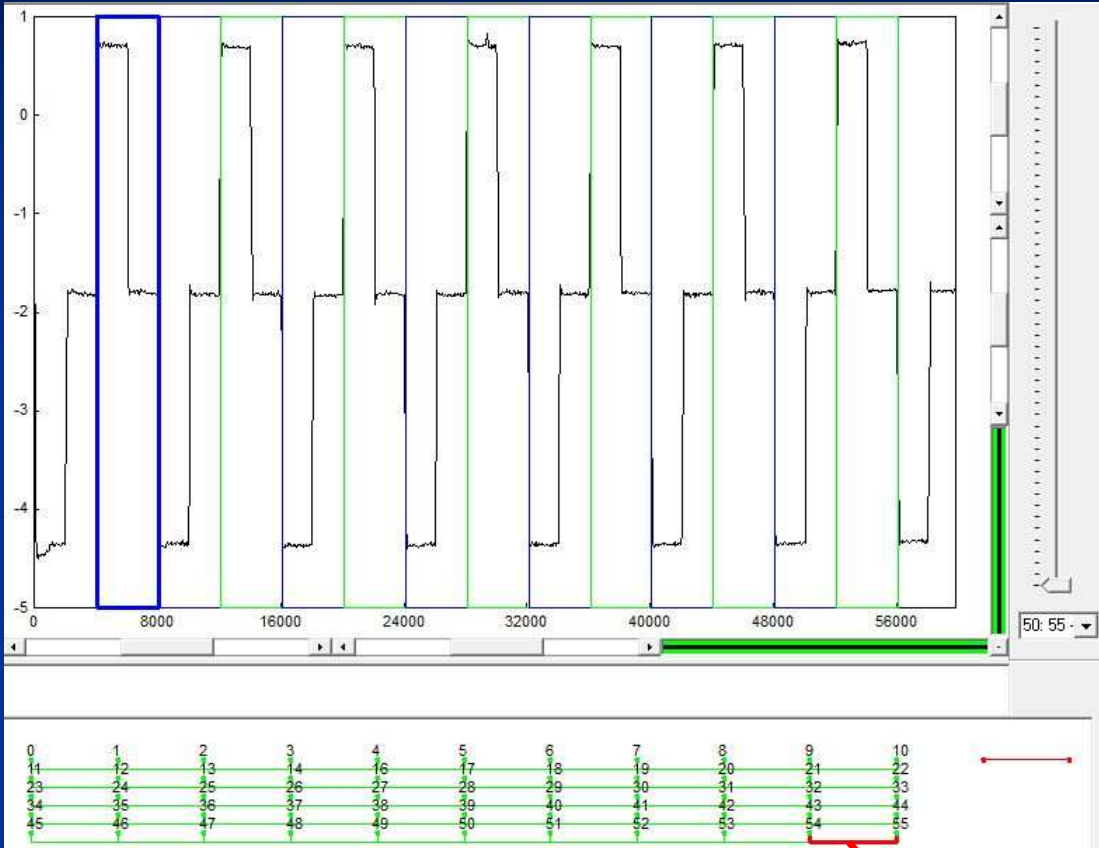
Reading Polarity



Measured Vp

	514000	514200	514400	514600	514800	515000	515200	515400	515600	515800
6478400	1.6045	1.9292	2.5863	2.9907	3.4117	5.2871	6.3711	12.2023	21.9345	94.8468
6478000	0.9118	1.7712	1.9457	2.4999	2.844	3.6266	4.2828	5.0506	5.4126	-0.1373
6477600	1.008	1.1934	1.214	1.2617	1.4731	1.3885	0.7045	-0.4241	-2.5519	-5.4802
6477200	0.7819	0.6659	0.4305	0.3245	0.066	-0.0349	-0.5103	-1.423	-2.7265	-3.8695
6476800	0.3778	0.2734	0.1476	-0.0684	-0.2648	-0.5952	-1.0421	-1.5818	-2.071	-2.5102

Reading Polarity



Measured Vp

	514000	514200	514400	514600	514800	515000	515200	515400	515600	515800
6478400	1.6045	1.9292	2.5863	2.9907	3.4117	5.2871	6.3711	12.2023	21.3345	94.8468
6478000	0.9118	1.7712	1.9457	2.4999	2.844	3.6266	4.2828	5.0506	5.4126	-0.1373
6477600	1.008	1.1934	1.214	1.2617	1.4731	1.3885	0.7045	-0.4241	-2.5519	-5.4802
6477200	0.7819	0.6659	0.4305	0.3245	0.066	-0.0349	-0.5103	-1.423	-2.7265	-3.8695
6476800	0.3778	0.2734	0.1476	-0.0684	-0.2648	-0.5952	-1.0421	-1.5818	-2.071	-2.5102

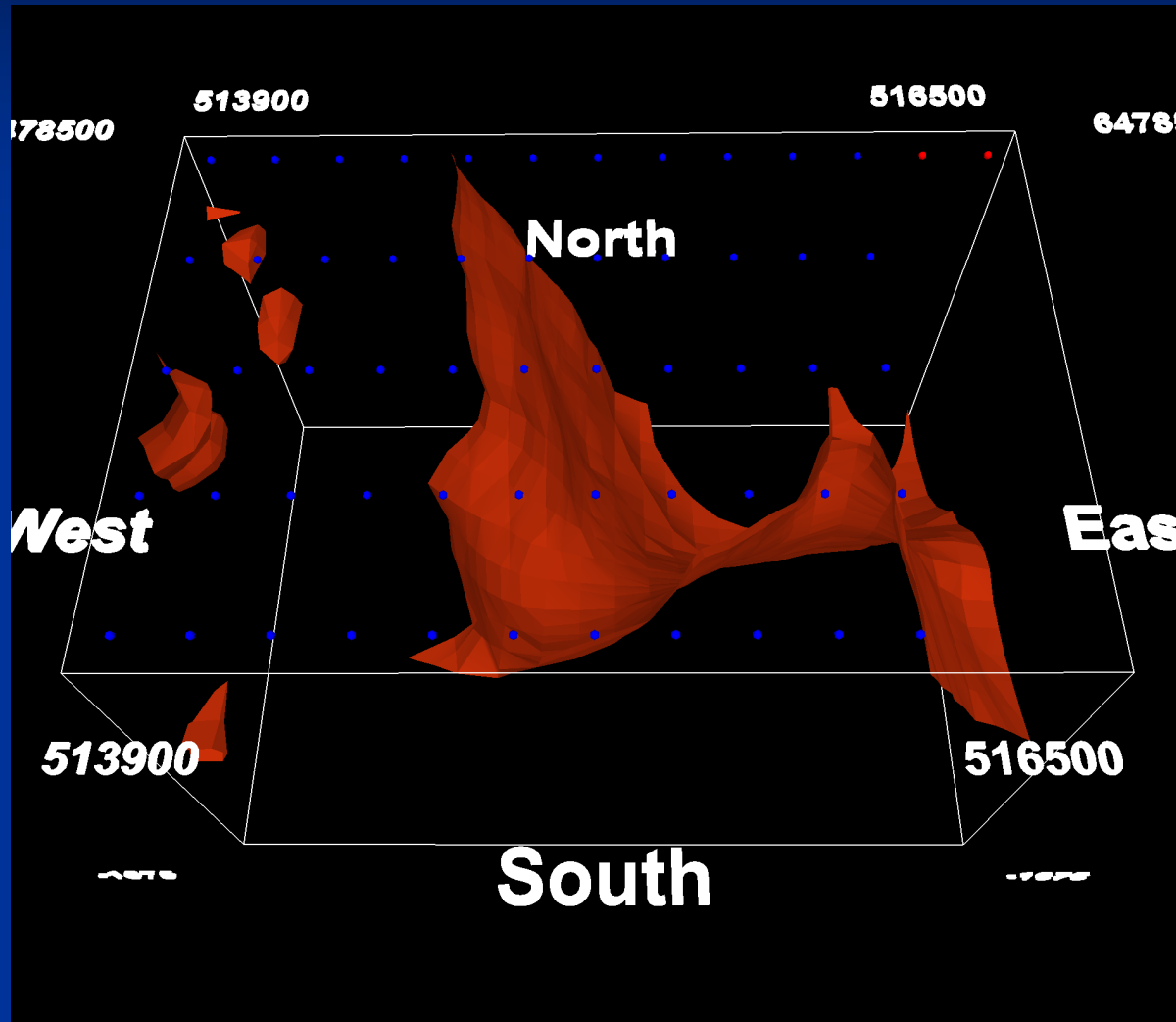
Reading Polarity



Measured Vp

	514000	514200	514400	514600	514800	515000	515200	515400	515600	515800
6478400	1.6045	1.9292	2.5863	2.9907	3.4117	5.2871	6.3711	12.2023	21.9345	94.8468
6478000	0.9118	1.7712	1.9457	2.4999	2.844	3.6266	4.2828	5.0506	5.4126	-0.1373
6477600	1.008	1.1934	1.214	1.2617	1.4731	1.3885	0.7045	-0.4241	-2.5519	-5.4802
6477200	0.7819	0.6659	0.4305	0.3245	0.066	-0.0349	-0.5103	-1.423	-2.7265	-3.8695
6476800	0.3778	0.2734	0.1476	-0.0684	-0.2648	-0.5952	-1.0421	-1.5818	-2.071	-2.5102

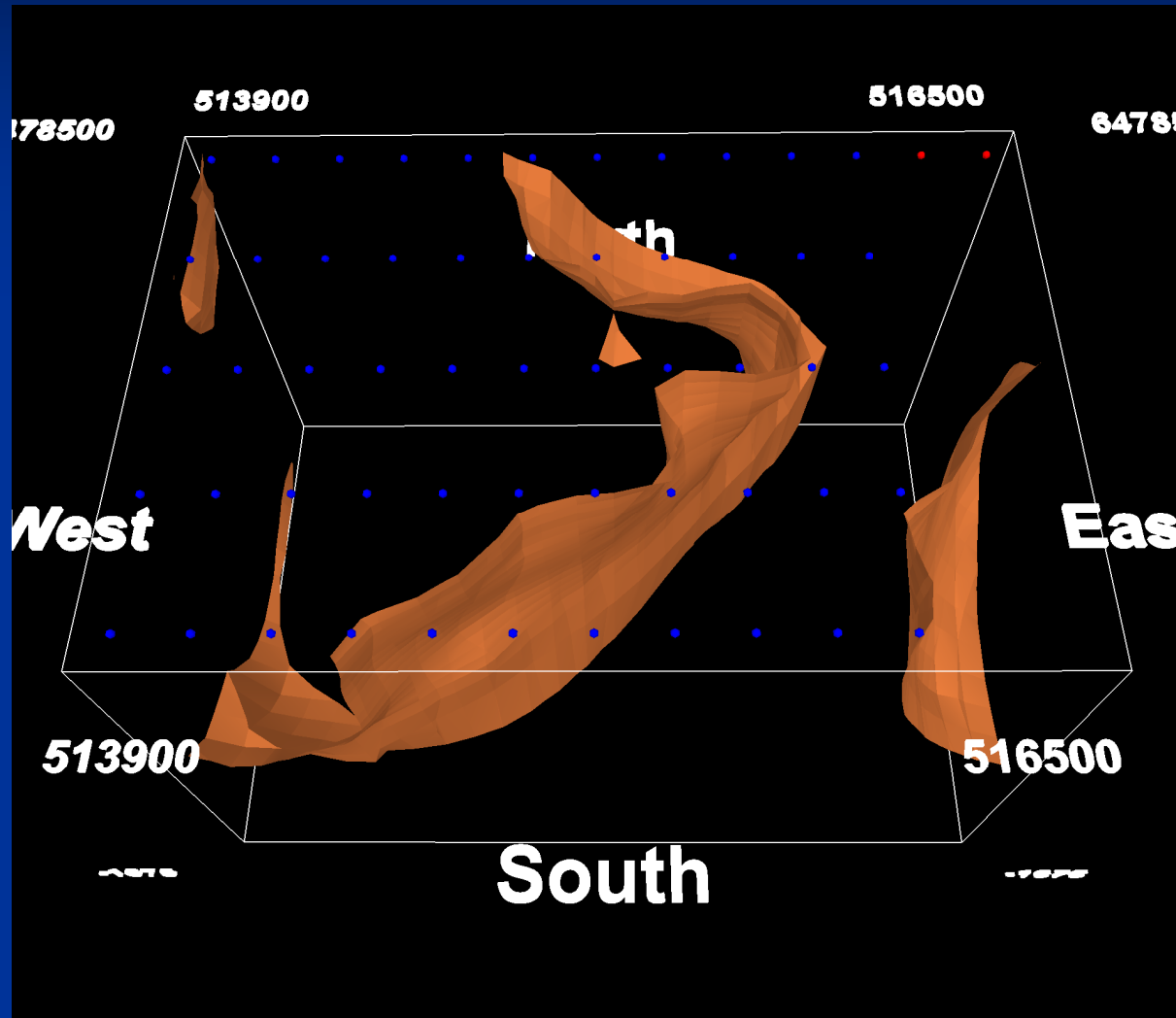
Effect of V_p sign on 3D inversion



Inversion using absolute V_p values

100 ohm.m isosurface

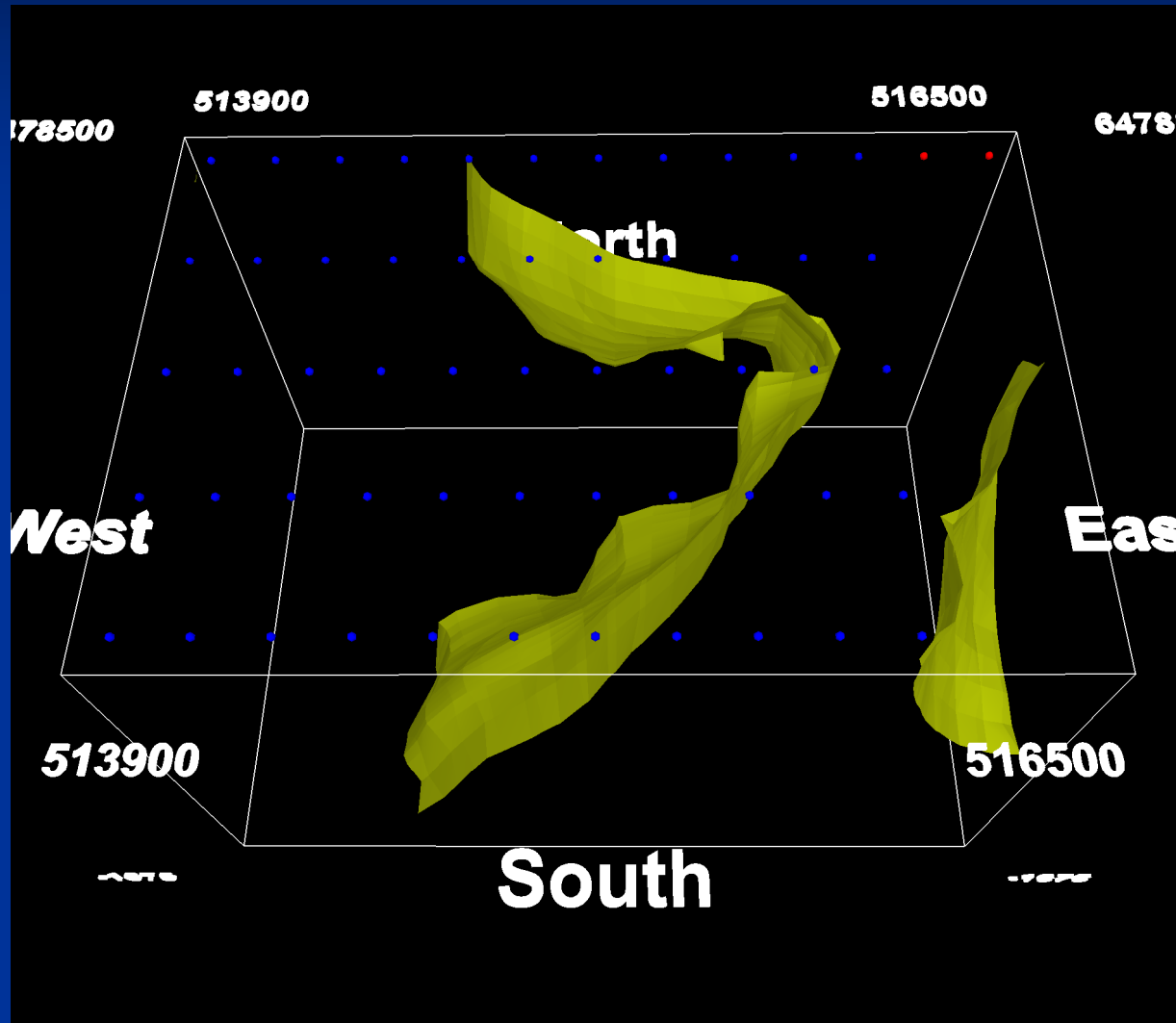
Effect of V_p sign on 3D inversion



Inversion using V_p values with sign from geometric factor

100 ohm.m isosurface

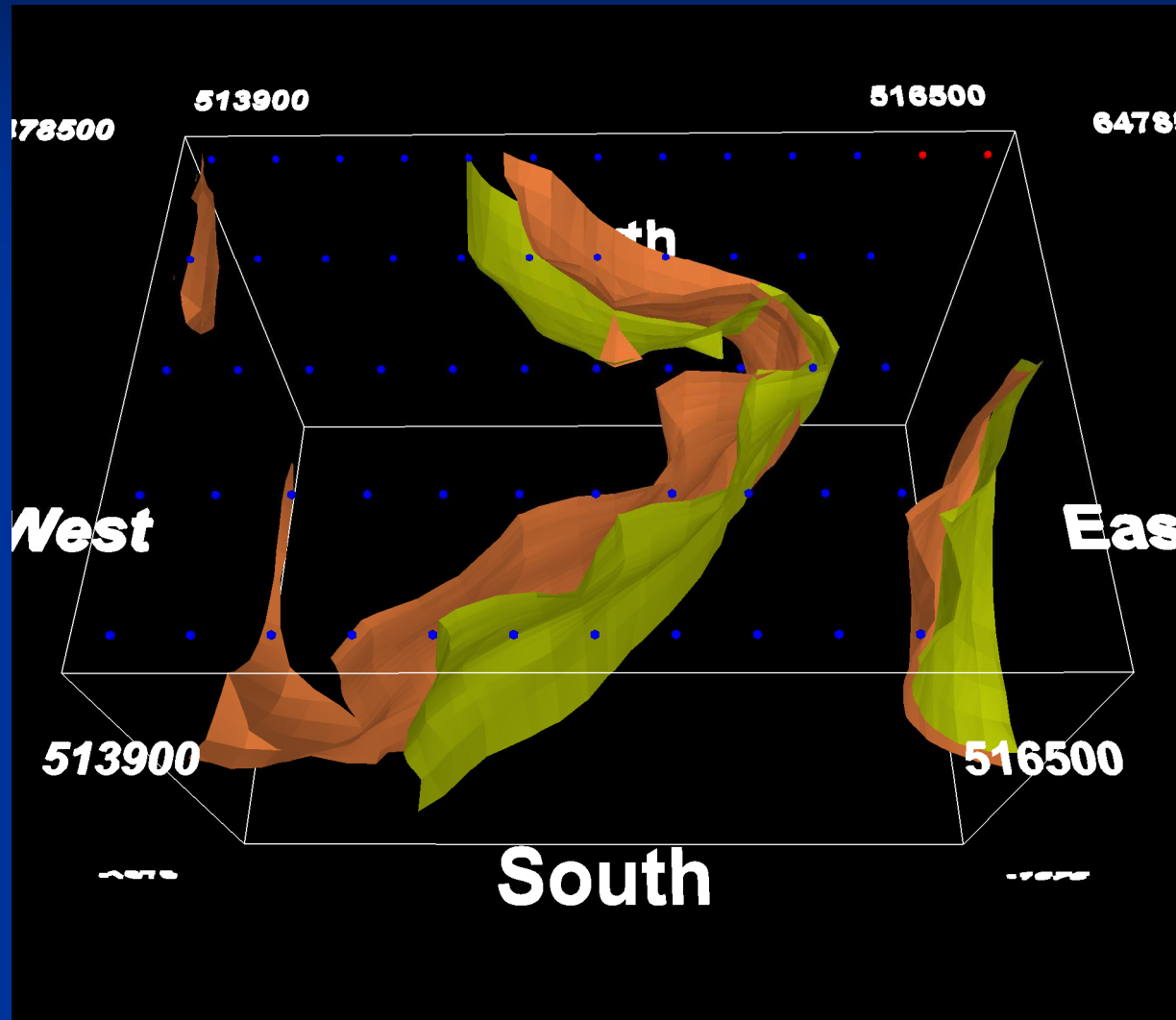
Effect of V_p sign on 3D inversion



Inversion using signs for observed V_p values

100 ohm.m isosurface

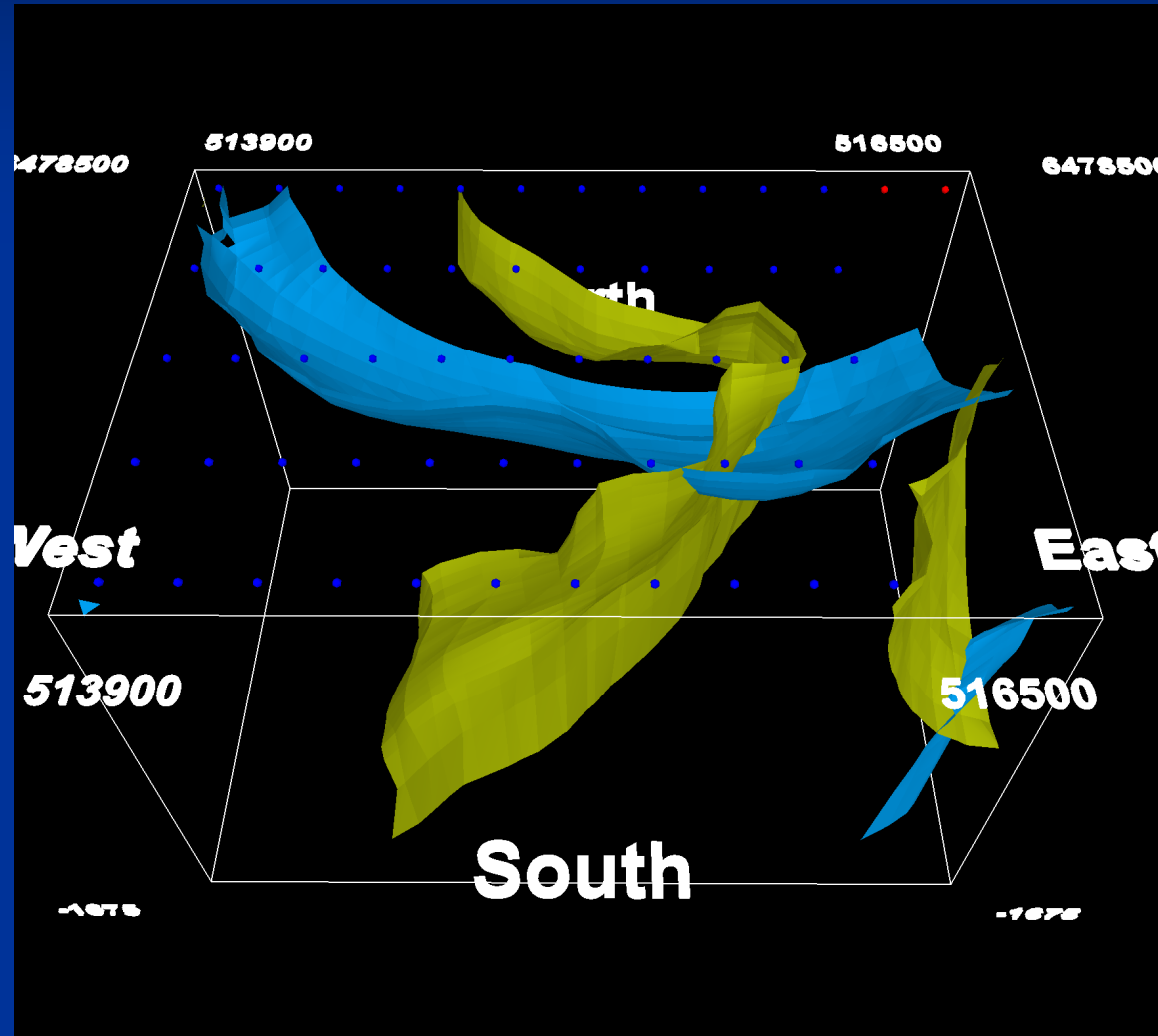
Effect of V_p sign on 3D inversion



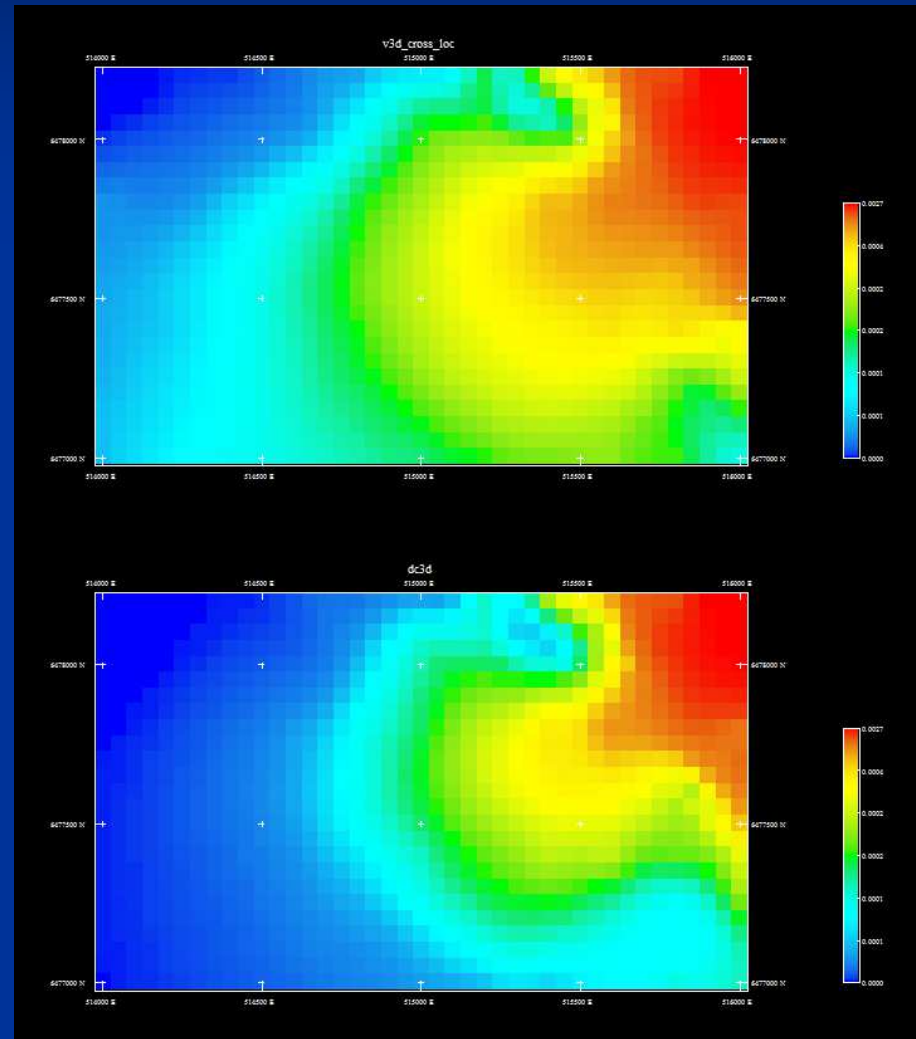
Comparison of inversion of geometric and observed V_p values

100 ohm.m isosurface

Effect of add cross-line dipoles to 3D inversion



Observed crossline V_p 's compared to forward model from inline 3d inversion



New transmitter 120kva

250amps @500volts



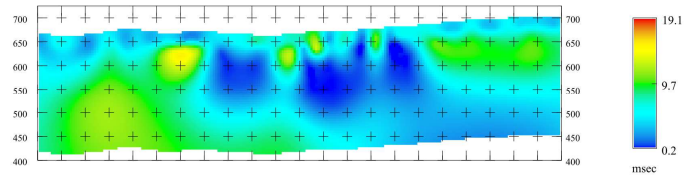
Search 32 channel Receivers



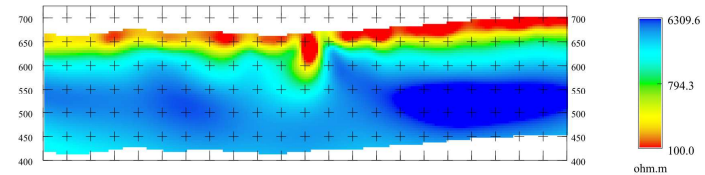
Pole-dipole vs Dipole-dipole

Model of Pole-Dipole Data 2007 (25m) Vs Dipole-Dipole Data 1987 (50m)

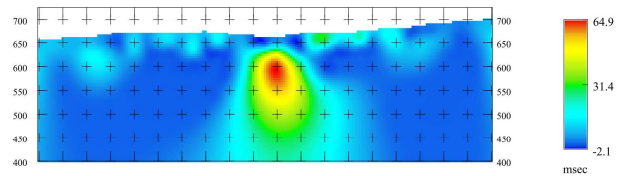
Chargeability Model 2007 Pole-Dipole (25m)



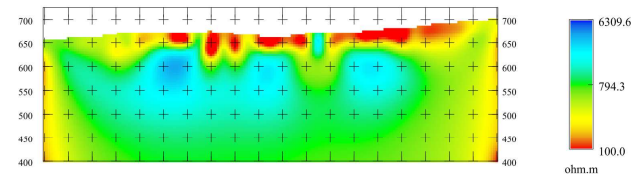
Resistivity Model 2007 Pole-Dipole (25m)



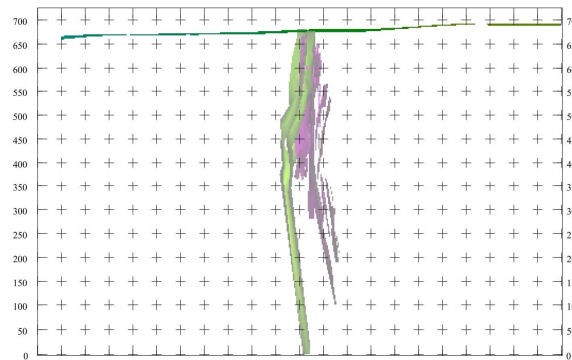
Chargeability Model 1987 Dipole-Dipole (50m)



Resistivity Model 1987 Dipole-Dipole (50m)



Geology Section (green = diorite; pink = ore body)



Geology Section (green = diorite; pink = ore body)

