

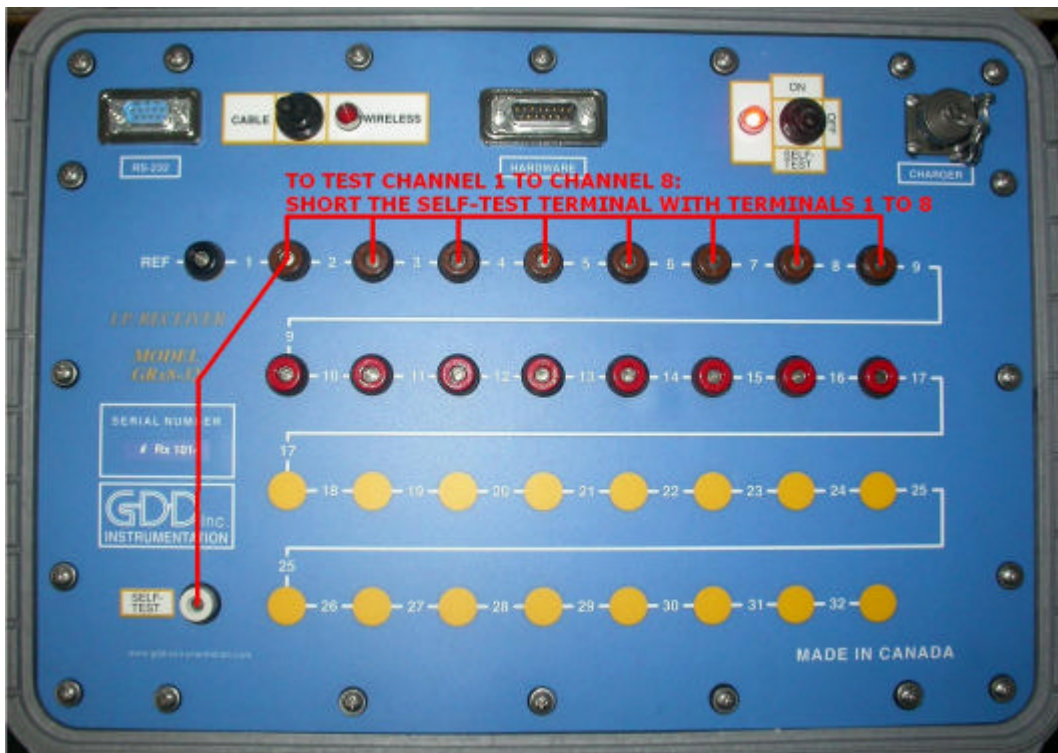
## 5.2.2 Simulation

The *Simulation* option is used to perform a self test with the internal waveform generator (you have to select the Pole-Pole configuration to use this option).

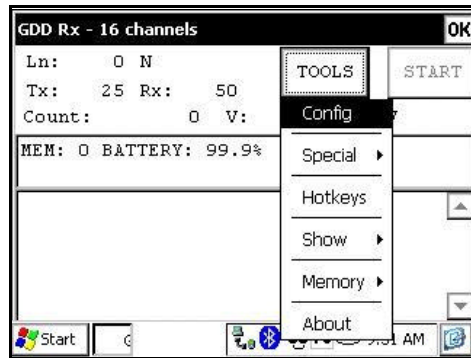
1. Select the Self-Test mode with the ON/OFF/SELF-TEST switch.



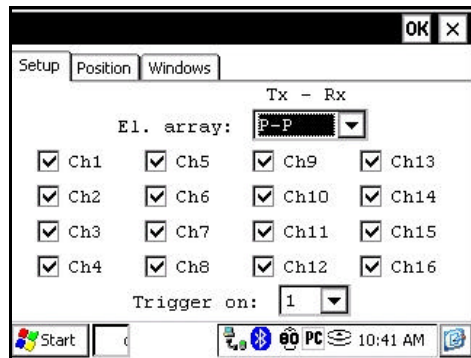
2. Short the Self-Test terminal with the channel(s) you want to test.



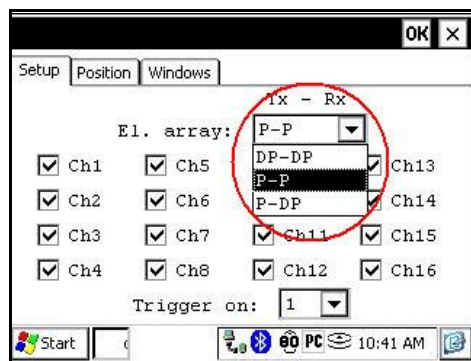
3. Select Tools | Config | Setup



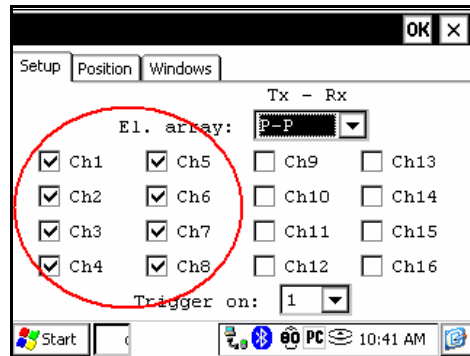
4. The following screen appears.



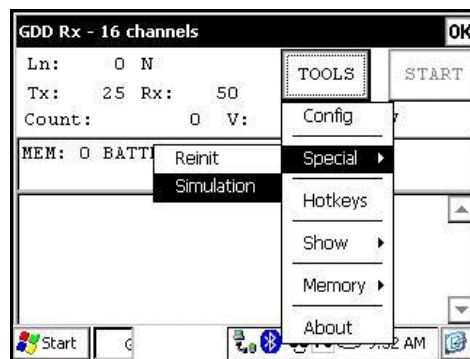
5. Select the Pole-Pole array configuration.



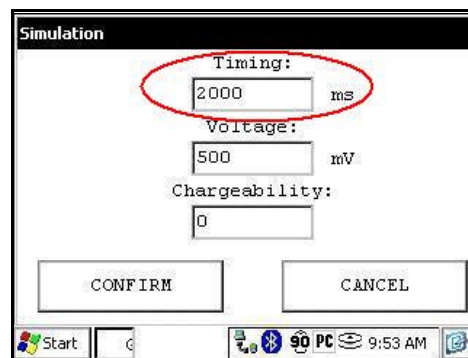
6. Check the channel(s) you want to test.



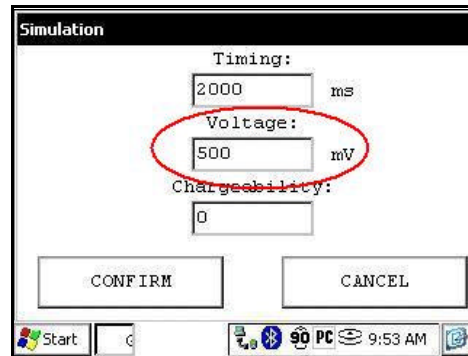
7. Select Tools | Special | Simulation



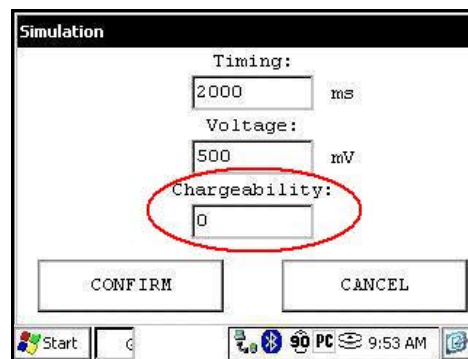
8. Enter the waveform timing (default = 2000ms).



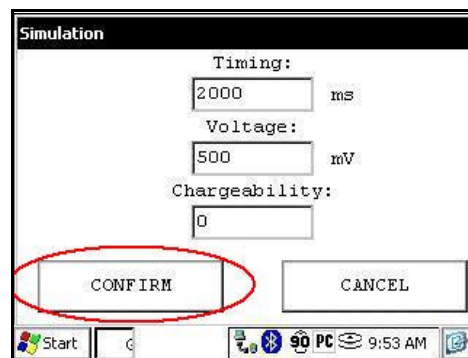
9. Enter the primary voltage (default = 500mV).



10. Enter the chargeability (default = 0)



11. Click on the *Confirm* button.



12. Click on the *Start* button to begin the acquisition procedure.

